

LOC/DME I-JVX 110.15 Chan 38 (Y)	APP CRS 346°	Rwy 34R Idg 11000 TDZE 681 Apt Elev 723	Rwy 34L Idg 10399 TDZE 686 Apt Elev 723
------------------------------------------------------	------------------------	--------------------------------------------------------------------	--------------------------------------------------------------------

ILS or LOC RWY 34R

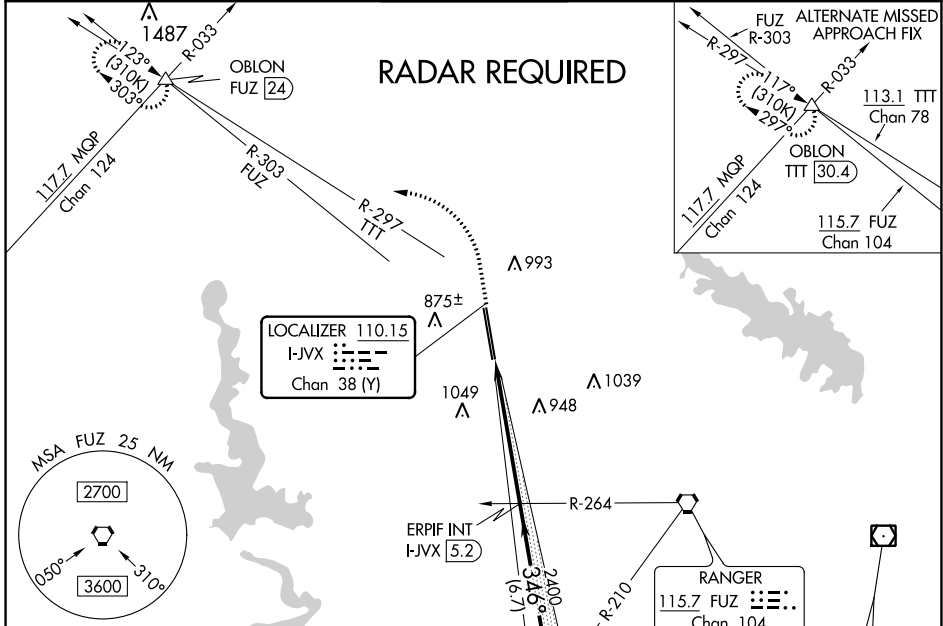
PEROT FLD/FORT WORTH ALLIANCE (A/FW)

⚠ Circling NA east of Rwy 16L-34R.
⚠ For inop ALS, increase S-ILS 34R Cat E visibility to RVR 4000 and S-LOC 34R, Cat E visibility to 1/8 SM.

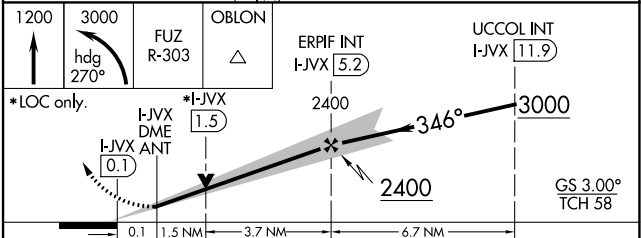
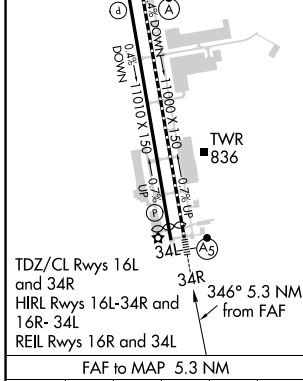


MISSED APPROACH: Climb to 1200 then climbing left turn to 3000 on heading 270° and FUZ VORTAC R-303 to OBLON INT/FUZ 24 DME and hold.

ATIS 126.925	REGIONAL APP CON 118.1 306.95	ALLIANCE TOWER 135.15 257.9	GND CON 132.65 306.2	CLNC DEL 128.725
------------------------	-----------------------------------------	---------------------------------------	--------------------------------	----------------------------



ELEV 723	D TDZE 34R 681 TDZE 34L 686
-----------------	-----------------------------------------------------



CATEGORY	A	B	C	D	E
S-ILS 34R	881/18 200 (200-1/2)				
S-LOC 34R	1240/24	559 (600-1/2)	1240/60	559 (600-1/4)	
SIDESTEP 34L	1240-1	554 (600-1)	1240-1 1/2 554 (600-1/2)	1240-2	554 (600-2)
C CIRCLING	1240-1 517 (600-1)	1320-1 597 (600-1)	1360-1 3/4 637 (700-1 3/4)	1380-2 657 (700-2)	1380-2 1/4 657 (700-2 1/4)

ILS or LOC RWY 34R

SC-2, 23 MAR 2023 to 20 APR 2023

SC-2, 23 MAR 2023 to 20 APR 2023