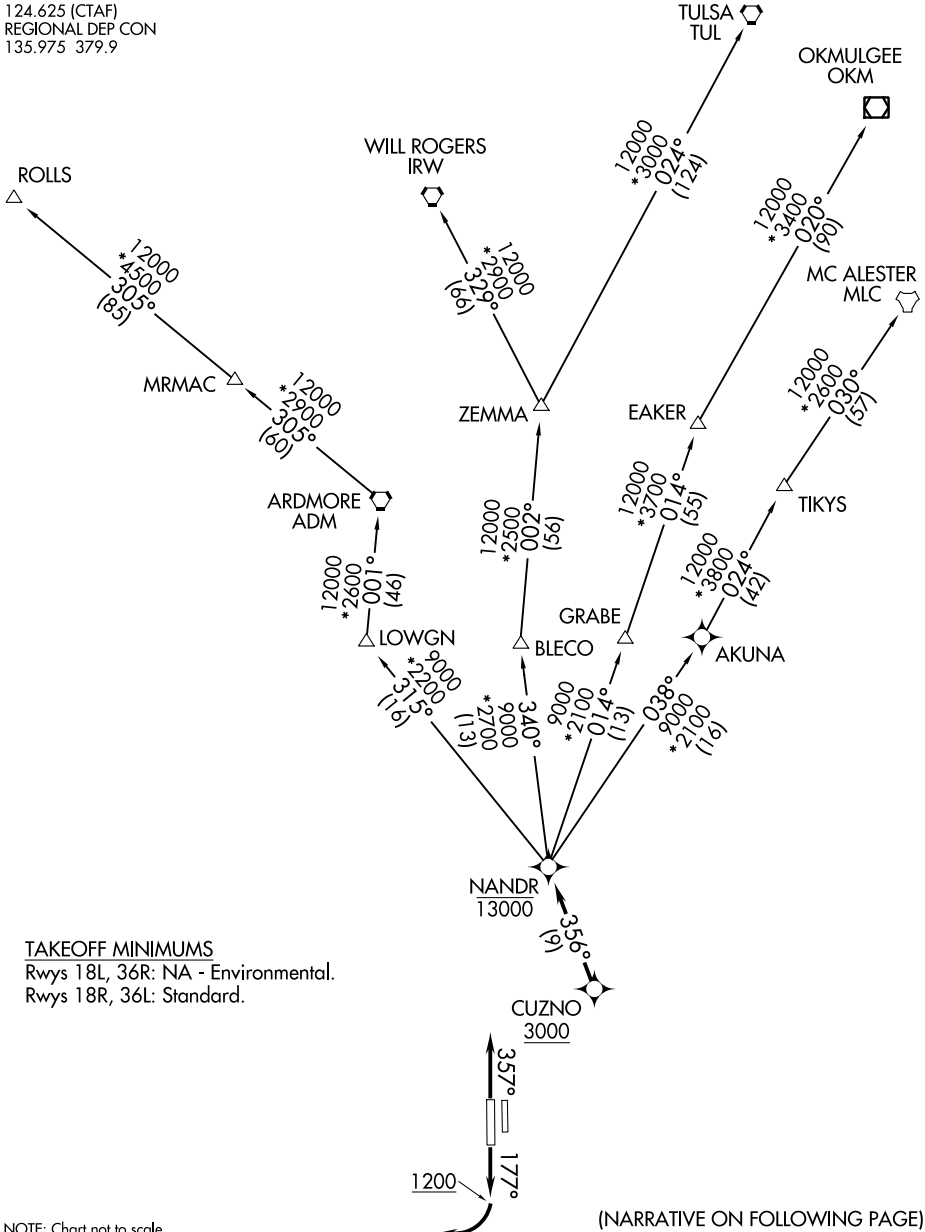


NANDR ONE DEPARTURE (RNAV)

ATIS
 120.025
 GND CON
 119.475
 SPINKS TOWER ★
 124.625 (CTAF)
 REGIONAL DEP CON
 135.975 379.9

RNAV 1 - DME/DME/IRU or GPS.
RADAR required.

**TOP ALTITUDE:
 ASSIGNED BY ATC**



SC-2, 23 MAR 2023 to 20 APR 2023

SC-2, 23 MAR 2023 to 20 APR 2023

TAKEOFF MINIMUMS

Rwys 18L, 36R: NA - Environmental.
 Rwys 18R, 36L: Standard.

NOTE: Chart not to scale.

(NARRATIVE ON FOLLOWING PAGE)

NANDR ONE DEPARTURE (RNAV)