

WAAS CH 78325 W02A	APP CRS 018°	Rwy Idg TDZE Apt Elev	6001 484 501
---------------------------------	------------------------	-----------------------------	-----------------------------------------

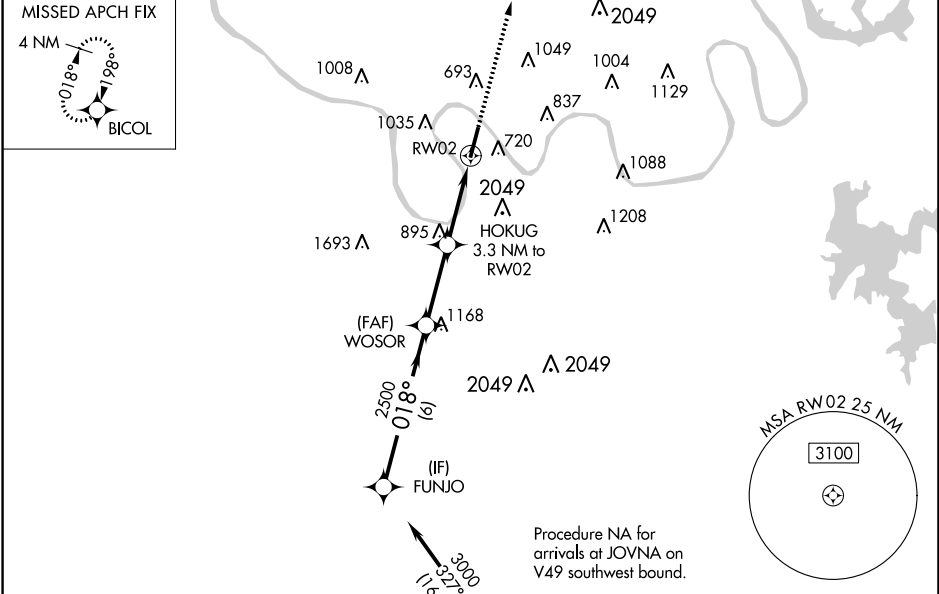
RNAV (GPS) RWY 2

JOHN C TUNE (JWN)

▽ For uncompensated Baro-VNAV systems, LNAV/VNAV NA below -15°C (5°F) or above 54°C (130°F). Circling NA E of Rwy 2-20. Baro-VNAV and VDP NA when using Nashville Intl altimeter setting. DME/DME RNP-0.3 NA. When local altimeter setting not received, use Nashville Intl altimeter setting and increase all DAs 39 feet and all MDAs 40 feet; increase LPV visibility all Cats 1/8 SM, LNAV visibility Cat B 1/4 SM.

MISSED APPROACH:
Climb to 3000 direct BICOL and hold.

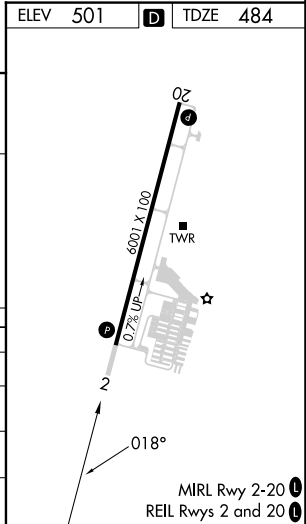
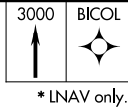
ATIS 127.075	NASHVILLE APP CON 119.35 372.0	JOHN TUNE TOWER * 119.45 (CTAF) 0	GND CON 121.7	CLNC DEL 121.7	CLNC DEL 124.55 (when twr closed)	UNICOM 122.7
------------------------	------------------------------------------	----------------------------------------------------	-------------------------	--------------------------	------------------------------------------------	------------------------



Procedure NA for arrivals at JOVNA on V49 southwest bound.

ELEV 501	D	TDZE 484
----------	----------	----------

FUNJO	3000		WOSOR	2500		HOKUG 3.3 NM to RW02	RW02
	018°			018°			
GP 3.00° TCH 40	2500		*1540				
CATEGORY	A	B	C	D			
LPV DA	734-7/8		250 (300-7/8)				
LNAV/VNAV DA	1079-2 1/2		595 (600-2 1/2)				
LNAV MDA	1160-1	676 (700-1)	1160-2	676 (700-2)			
C CIRCLING	1200-1	699 (700-1)	1340-2 3/4	839 (900-2 3/4)			



MIRL Rwy 2-20 **0**
REIL Rwys 2 and 20 **0**

SE-1, 23 MAR 2023 to 20 APR 2023

SE-1, 23 MAR 2023 to 20 APR 2023