

LOC/DME I-JWN <b>110.3</b> Chan <b>40</b>	APP CRS <b>198°</b>	Rwy Idg TDZE Apt Elev	<b>6001</b> <b>501</b> <b>501</b>
---	------------------------	-----------------------------	---

# ILS or LOC RWY 20

JOHN C TUNE (JWN)

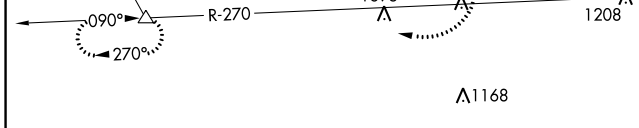
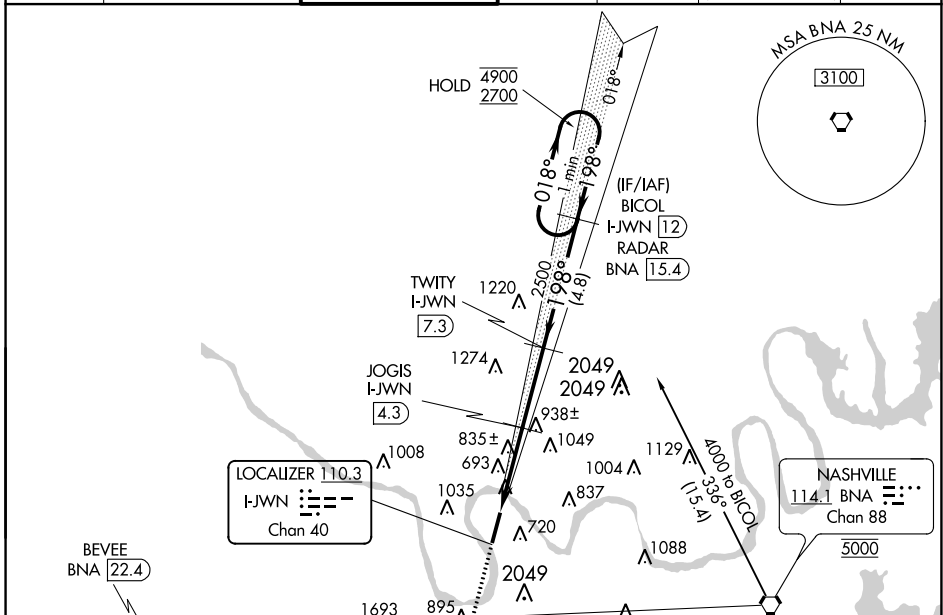
DME required.

**V** Circling NA east of Rwy 2-20. VDP NA when using Nashville Intl altimeter setting.

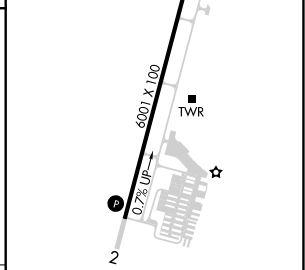
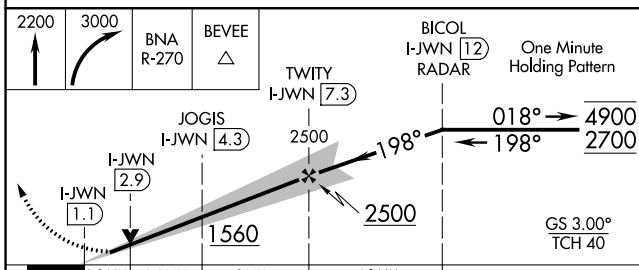
**NA** When local altimeter setting not received, use Nashville Intl altimeter setting and increase S-ILS 20 DA to 738 feet, increase all MDA's 40 feet.

**MISSED APPROACH:** Climb to 2200 then climbing right turn to 3000 on BNA VORTAC R-270 to BEVEE/BNA 22.4 DME and hold.

ATIS <b>127.075</b>	NASHVILLE APP CON <b>119.35 372.0</b>	JOHN TUNE TOWER ★ <b>119.45 (CTAF)</b> <b>0</b>	GND CON <b>121.7</b>	CLNC DEL <b>121.7</b>	CLNC DEL <b>124.55</b> (when twr closed)	UNICOM <b>122.7</b>
------------------------	--	--	-------------------------	--------------------------	--	------------------------



ELEV 501	<b>D</b>	TDZE 501
----------	----------	----------



CATEGORY	A	B	C	D
S-ILS 20	701-3/4 200 (200-3/4)			
S-LOC 20	1100-1	599 (600-1)	1100-1 3/4	599 (600-1 3/4)
<b>C</b> CIRCLING	1200-1	699 (700-1)	1340-2 1/2	1340-2 3/4
			839 (900-2 1/2)	839 (900-2 3/4)

SE-1, 23 MAR 2023 to 20 APR 2023

SE-1, 23 MAR 2023 to 20 APR 2023