

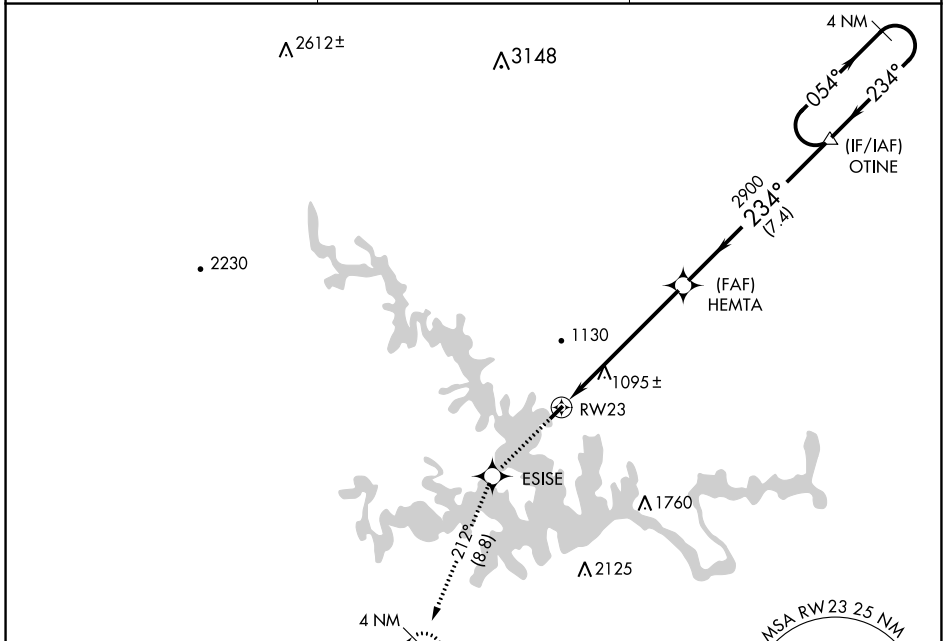
APP CRS 234°	Rwy Idg 3058
	TDZE 892
	Apt Elev 892

RNAV (GPS) RWY 23

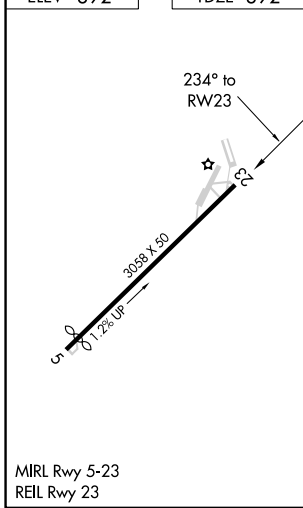
SMITH MOUNTAIN LAKE (W91)

<p>▽ NA</p> <p>DME/DME RNP-0.3 NA. Use Lynchburg altimeter setting; when not received, use Roanoke altimeter setting and increase all MDA 40 feet. Procedure NA at night. Helicopter visibility reduction below 1 SM NA.</p>	<p>MISSED APPROACH: Climb to 4000 direct ESISE and on track 212° to PIGGS and hold.</p>
---	---

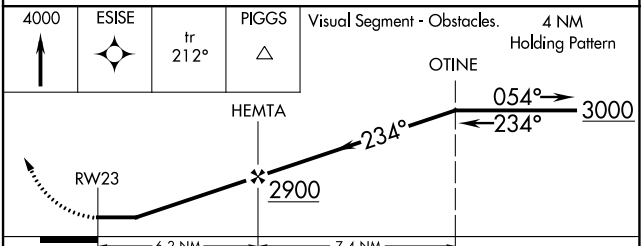
LYH ASOS 119.8	ROANOKE APP CON 135.0 254.325	UNICOM 122.975 (CTAF)
--------------------------	---	---------------------------------



ELEV 892	TDZE 892
----------	----------



4000	ESISE	PIGGS	Visual Segment - Obstacles.	4 NM Holding Pattern
↑	✧	tr 212° △		



CATEGORY	A	B	C	D
LNAV MDA	1900-3	1008 (1100-3)	NA	
CIRCLING	1900-3	1008 (1100-3)	NA	

NE-3, 23 MAR 2023 to 20 APR 2023

NE-3, 23 MAR 2023 to 20 APR 2023