


LOC I-AEG 110.1	APP CRS 215°	Rwy Idg TDZE Apt Elev	7398 5817 5837
---------------------------	------------------------	-----------------------------	---

ILS or LOC RWY 22

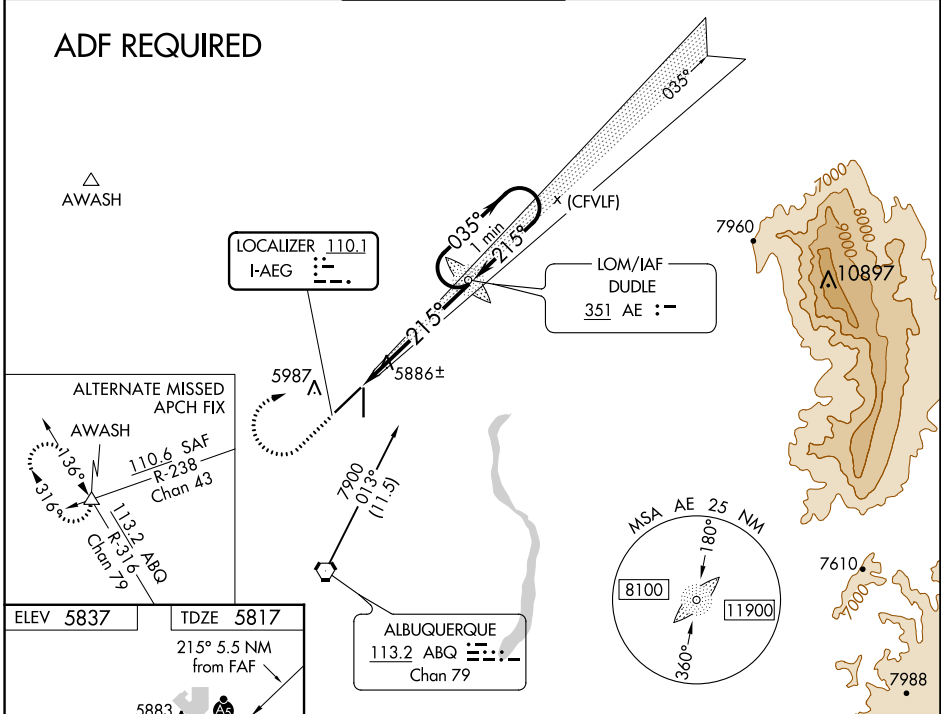
DOUBLE EAGLE II (AEG)

NA When local altimeter setting not received, use Albuquerque Intl Suport altimeter setting and increase all DA 94 feet, increase all MDA 100 feet, and increase visibility S-LOC 22 Cats C/D ¼ mile, Circling Cats C/D ½ mile. For inop MALSr when using Albuquerque Intl Suport altimeter setting, increase visibility S-ILS 22 all Cats ⅜ mile.

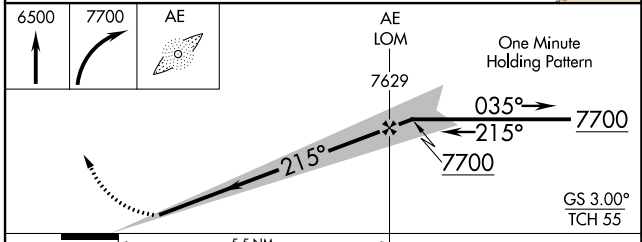
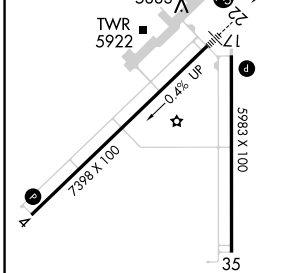
MALSr  MISSED APPROACH: Climb to 6500 then climbing right turn 7700 direct DUDLE LOM and hold.


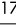
ATIS 119.025	ALBUQUERQUE APP CON 127.4 253.5	DOUBLE EAGLE II TOWER * 120.15 (CTAF)	GND CON 121.625	CLNC DEL 124.8 (When twr closed)
------------------------	---	---	---------------------------	---

ADF REQUIRED




ELEV 5837	TDZE 5817
215° 5.5 NM from FAF	



REL Rwy 17 and 35 
MIRL Rwy 4-22 and 17-35 

FAF to MAP 5.5 NM

Knots	60	90	120	150	180
Min:Sec	5:30	3:40	2:45	2:12	1:50

CATEGORY	A	B	C	D
S-ILS 22	6017-½ 200 (200-½)			
S-LOC 22	6140-½ 323 (400-½)			
 CIRCLING	6400-1	563 (600-1)	6420-1½ 583 (600-1½)	6640-2½ 803 (900-2½)

SW-1, 23 MAR 2023 to 20 APR 2023

SW-1, 23 MAR 2023 to 20 APR 2023