

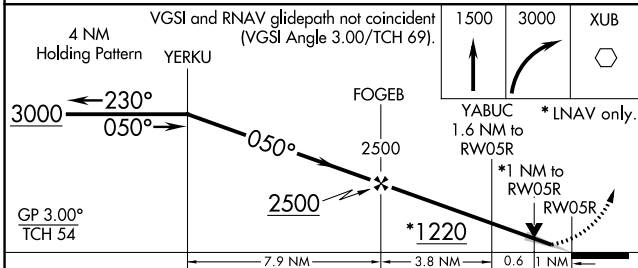
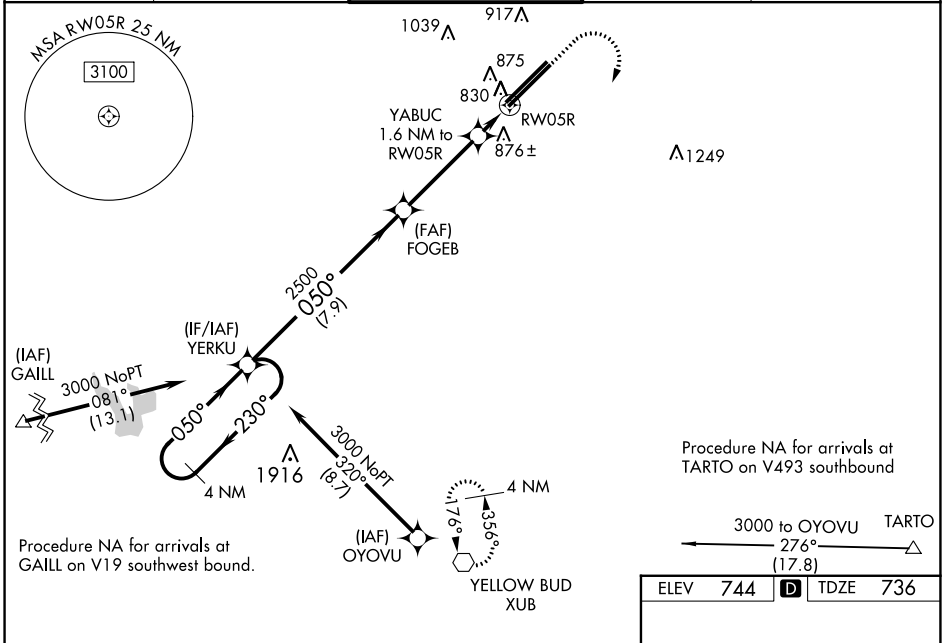
WAAS CH 78410	APP CRS 050°	Rwy Idg 12103 TDZE 736 Apt Elev 744
-------------------------	------------------------	--

RNAV (GPS) RWY 5R

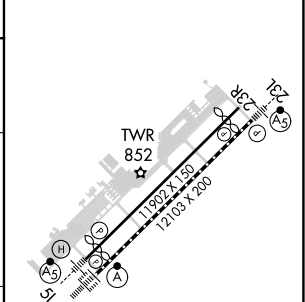
RICKENBACKER INTL (LCK)

RNP APCH.	<p>▲ Baro-VNAV NA when using John Glenn Columbus Intl altimeter setting. For uncompensated Baro-VNAV systems, LNAV/VNAV NA below -16°C or above 54°C. Circling NA northwest of Rwy 5L-23R. VDP NA with John Glenn Columbus Intl altimeter setting. When local altimeter setting not received, use John Glenn Columbus Intl altimeter setting: increase LPV DA to 971 feet; increase LNAV/VNAV DA to 1138 feet and visibility to RVR 4000 all Cats; increase all MDAs 40 feet and LNAV Cats C/D visibility to RVR 4000 and Circling Cat D visibility to 2 ¼ SM. For inop ALS when using John Glenn Columbus Intl altimeter setting, increase LNAV/VNAV visibility to 6000, all Cats.</p>	<p>ALSF-2</p>	<p>MISSED APPROACH: Climb to 1500 then climbing right turn to 3000 direct XUB VOR and hold.</p>
-----------	---	---------------	---

ATIS 132.75	COLUMBUS APP CON 134.0 279.6	RICK TOWER 120.05 348.4	GND CON 125.275 275.8	CLNC DEL 125.275 275.8
-----------------------	--	-----------------------------------	---------------------------------	----------------------------------



ELEV 744	TDZE 736
----------	----------



CATEGORY	A	B	C	D
LPV DA		936/18	200 (200-½)	
LNAV/VNAV DA		1103/35	367 (400-¾)	
LNAV MDA	1120/24	384 (400-½)	1120/35	384 (400-¾)
CIRCLING	1240-1	496 (500-1)	1280-1½ 536 (600-1½)	1400-2 656 (700-2)

TDZ/CL Rwy 5R
REIL Rwy 23R
HIRL Rwys 5L-23R and 5R-23L

EC-2, 23 MAR 2023 to 20 APR 2023

EC-2, 23 MAR 2023 to 20 APR 2023