

LOC I-LCK 110.1	APP CRS 232°	Rwy Idg 23L 23R TDZE 740 743 Apt Elev 744 744
---------------------------	------------------------	--

ILS or LOC RWY 23L

RICKENBACKER INTL (LCK)

⚠ Circling NA northwest of Rwy 5L-23R. When local altimeter setting not received, use John Glenn Columbus Intl altimeter setting: increase DA to 975 feet; increase all MDAs 40 feet and S-LOC 23L visibility Cats C/D to RVR 5500 and Circling visibility Cat D to 2 1/4 SM. Autopilot coupled approach NA below 1000 MSL.



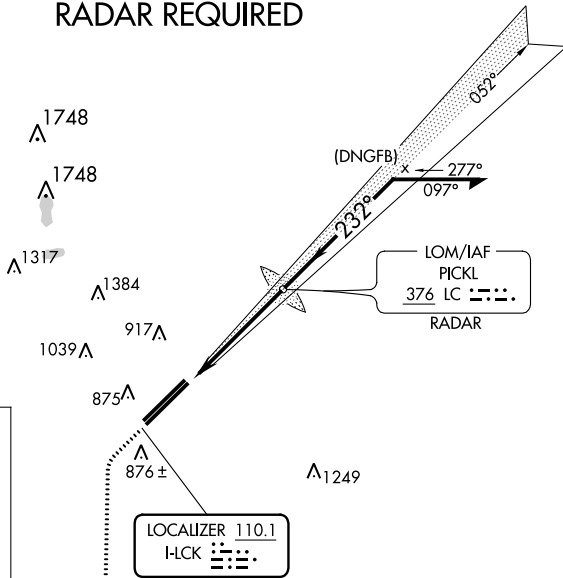
MISSED APPROACH: Climb to 3000, then left turn direct XUB VOR and hold.

ATIS 132.75	COLUMBUS APP CON 134.0 279.6	RICK TOWER 120.05 348.4	GND CON 125.275 275.8	CLNC DEL 125.275 275.8
-----------------------	--	-----------------------------------	---------------------------------	----------------------------------

ALTERNATE MISSED APCH FIX

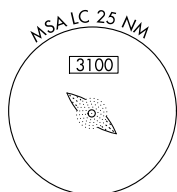
PICKL
376 LC

RADAR REQUIRED

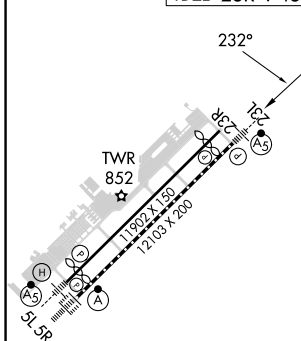


MISSED APCH FIX

YELLOW BUD
XUB
112.5



ELEV 744	TDZE 23L 740	TDZE 23R 743
----------	--------------	--------------



3000

XUB

LC LOM RADAR

Remain within 10 NM

VGSI and ILS glidepath not coincident (VGSI Angle 3.00/TCH 78).

GS 3.00°
TCH 62

4.9 NM

CATEGORY	A	B	C	D
S-ILS 23L	940/24 200 (200-1/2)			
S-LOC 23L	1 220/24	480 (500-1/2)	1 220/50	480 (500-1)
SIDESTEP RWY 23R	1 220-1	477 (500-1)	1 220-1 1/2 477 (500-1 1/2)	1 220-2 477 (500-2)
CIRCLING	1 240-1	496 (500-1)	1 280-1 1/2 536 (600-1 1/2)	1 400-2 656 (700-2)

FAF to MAP 4.9 NM

Knots	60	90	120	150	180
Min:Sec	4:54	3:16	2:27	1:58	1:38

EC-2, 23 MAR 2023 to 20 APR 2023

EC-2, 23 MAR 2023 to 20 APR 2023