

VORTAC SGD 112.1 Chan 58	APP CRS 276°	Rwy Idg 3600 TDZE 86 Apt Elev 90
---------------------------------------	------------------------	---

VOR RWY 29

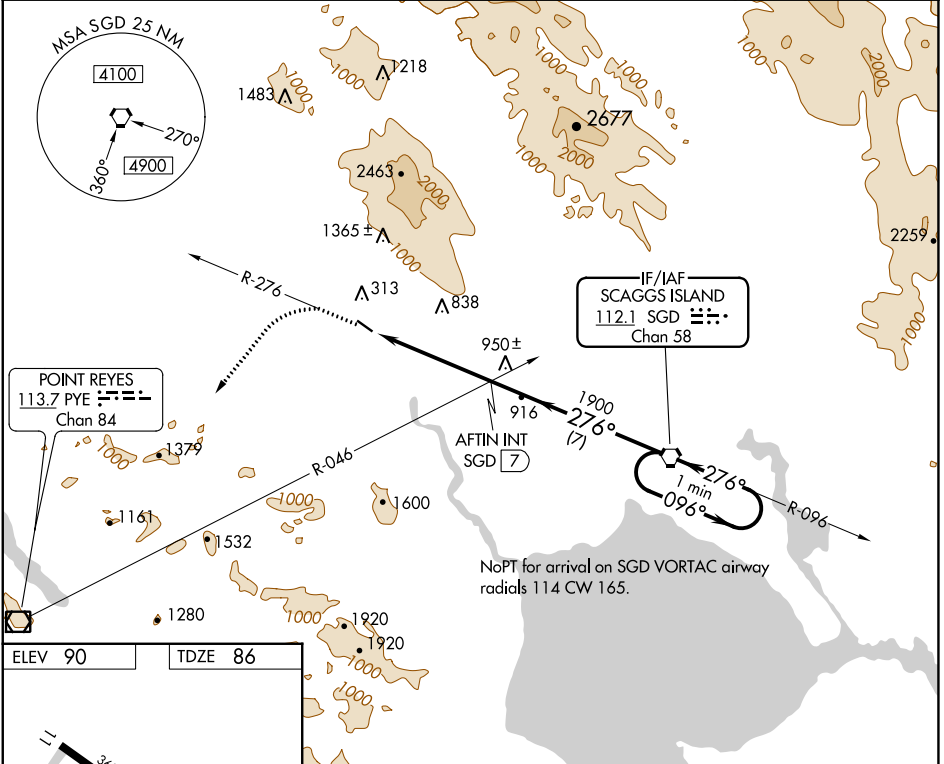
PETALUMA MUNI (O69)

N Night landing: Rwy 11 NA, Rwy 29 operational VGSI required, remain on or above VGSI glidepath until threshold.
NA Helicopter visibility reduction below 1 SM NA.
MISSED APPROACH: Climb to 2000 via SGD R-276 then climbing left turn to 3500 direct PYE VOR/DME.

AWOS-3P
132.325

OAKLAND CENTER
127.8 353.5

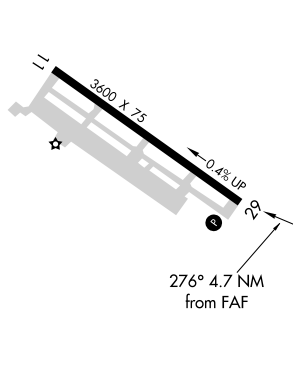
UNICOM
122.7 (CTAF)



SW-2, 23 MAR 2023 to 20 APR 2023

SW-2, 23 MAR 2023 to 20 APR 2023

ELEV 90	TDZE 86
---------	---------



REIL Rwy 29 **1**
MRL Rwy 11-29 **1**

FAF to MAP 4.7 NM

Knots	60	90	120	150	180
Min:Sec	4:42	3:08	2:21	1:53	1:34

2000	3500	PYE	DME unusable from SGD VORTAC 11.1 DME to MAP.	
SGD R-276				
		SGD VORTAC	One Minute Holding Pattern	
CATEGORY	A	B	C	D
S-29	1260-1¼ 1174 (1200-1¼)	1260-1½ 1174 (1200-1½)		NA
CIRCLING	1260-1⅛ 1170 (1200-1⅛)	1260-1½ 1170 (1200-1½)		NA