

PERRY, OKLAHOMA

AL-6798 (FAA)

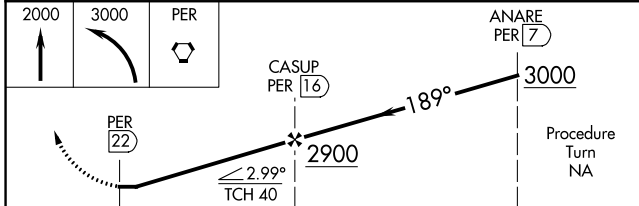
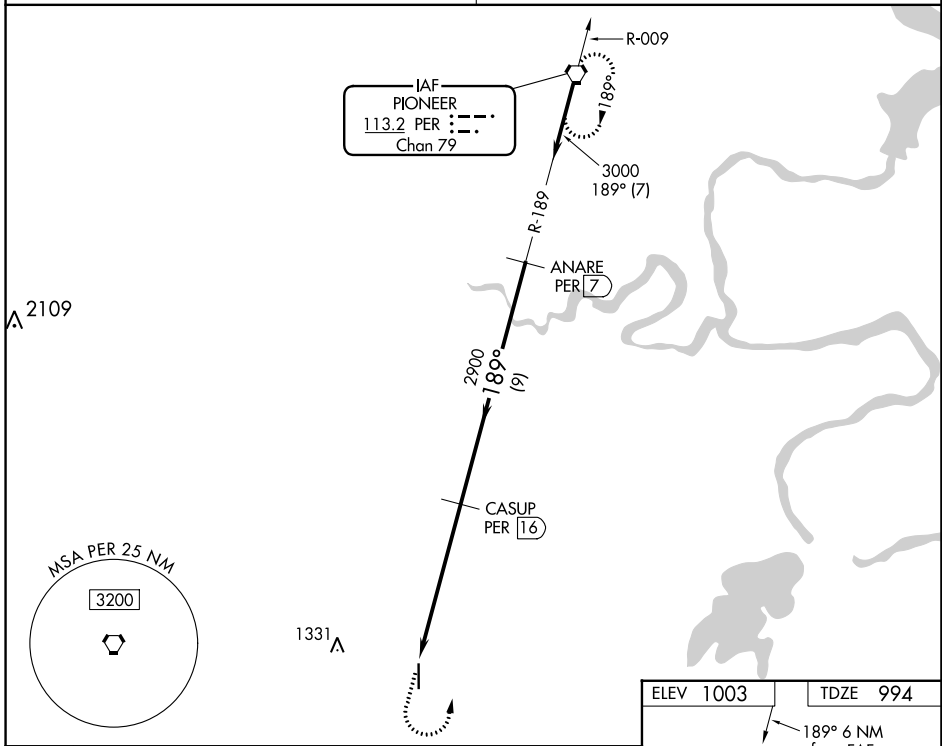
20114

VORTAC PER <b>113.2</b> Chan <b>79</b>	APP CRS <b>189°</b>	Rwy Idg <b>5103</b> TDZE <b>994</b> Apt Elev <b>1003</b>
--	------------------------	--

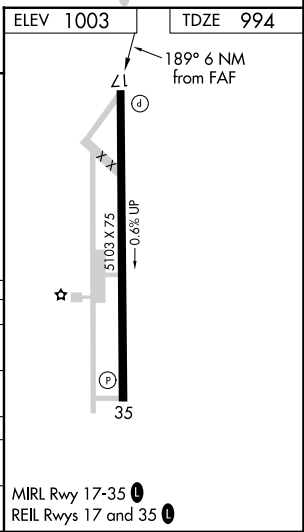
# VOR RWY 17

PERRY MUNI (F22)

<b>NA</b> Obtain local altimeter setting on CTAF; when not received, use Ponca City altimeter setting. DME required.	MISSED APPROACH: Climb to 2000 then climbing left turn to 3000 direct PER VORTAC and hold.
KANSAS CITY CENTER <b>127.8 319.1</b>	UNICOM <b>122.8 (CTAF) 0</b>



CATEGORY	A	B	C	D
S-17	1500-1 506 (500-1)	1500-1¼ 506 (500-1¼)	1500-1½ 506 (500-1½)	NA
<b>C</b> CIRCLING	1500-1 497 (500-1)	1500-1¼ 497 (500-1¼)	1620-1¾ 617 (700-1¾)	NA
PONCA CITY ALTIMETER SETTING MINIMUMS				
S-17	1560-1 566 (600-1)	1560-1¼ 566 (600-1¼)	1560-1½ 566 (600-1½)	NA
<b>C</b> CIRCLING	1560-1 557 (600-1)	1560-1¼ 557 (600-1¼)	1680-2 677 (700-2)	NA



PERRY, OKLAHOMA  
Amdt 3D 23APR20

36°23'N-97°17'W

# PERRY MUNI (F22) VOR RWY 17

SC-1, 23 MAR 2023 to 20 APR 2023