

WAAS CH 61140 W35A	APP CRS 354°	Rwy Idg TDZE 1003 Apt Elev 1003
--	------------------------	---

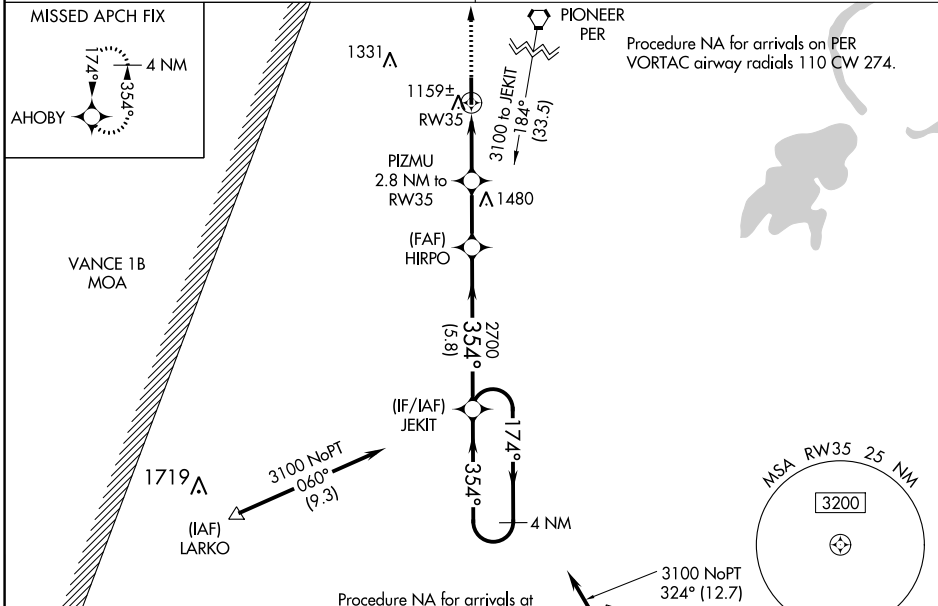
RNAV (GPS) RWY 35

PERRY MUNI (F22)

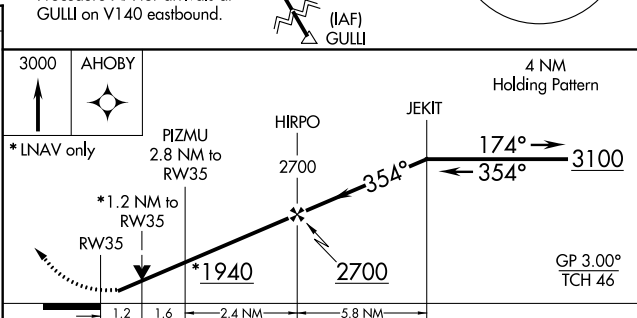
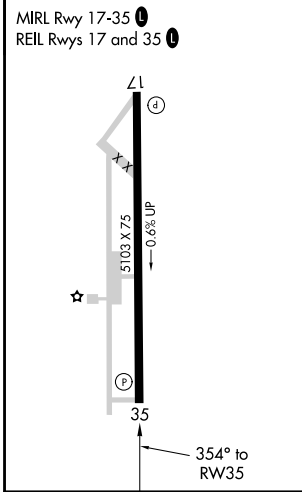
NA For uncompensated Baro-VNAV systems, procedure NA below -16°C (4°F) or above 54°C (130°F). DME/DME RNP-0.3 NA. Baro-VNAV and VDP NA when using Ponca City altimeter setting. Rwy 35 helicopter visibility reduction below 3/4 SM NA. Obtain local altimeter setting on CTAF; when not received, use Ponca City altimeter setting and increase all DA 53 feet and all visibility 1/8 SM, increase all MDAs 60 feet and Cat C visibility 1/4 SM.

MISSED APPROACH:
Climb to 3000 direct AHOBY and hold.

KANSAS CITY CENTER **127.8 319.1** UNICOM **122.8 (CTAF)**



ELEV 1003 TDZE 1003



CATEGORY	A	B	C	D
LPV DA	1253-3/4	250 (300-3/4)		NA
LNAV/VNAV DA	1330-1 1/8	327 (400-1 1/8)		NA
LNAV MDA	1420-1	417 (500-1)	1420-1 1/8 417 (500-1 1/8)	NA
C CIRCLING	1480-1	477 (500-1)	1620-1 3/4 617 (700-1 3/4)	NA

SC-1, 23 MAR 2023 to 20 APR 2023

SC-1, 23 MAR 2023 to 20 APR 2023