

WAAS CH <b>72921</b> W17A	APP CRS <b>174°</b>	Rwy Idg TDZE <b>994</b> Apt Elev <b>1002</b>
---------------------------------	------------------------	--

# RNAV (GPS) RWY 17

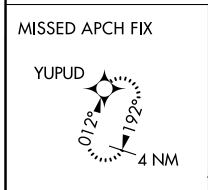
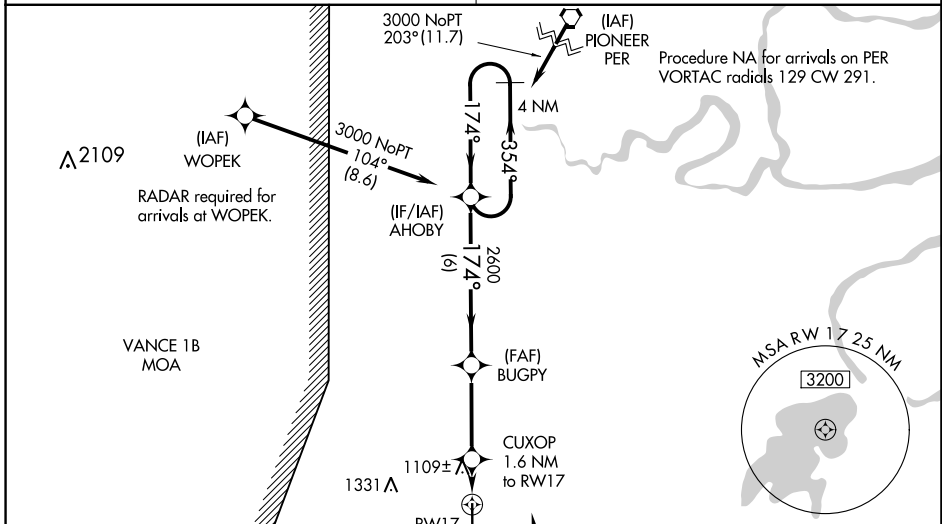
PERRY MUNI (F22)

RNP APCH.

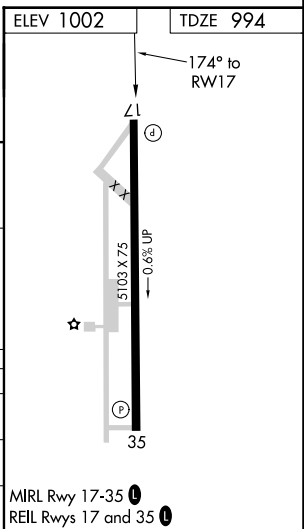
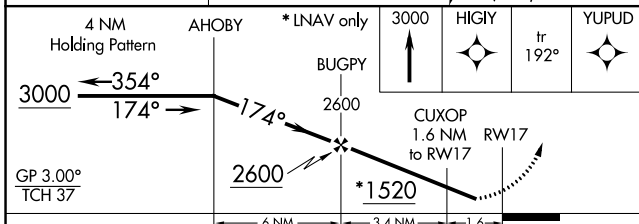
**NA** Baro-VNAV NA when using KPNC altimeter setting. For uncompensated Baro-VNAV systems, LNAV/VNAV NA below -16°C or above 54°C. When VGSI inop, procedure NA at night. Rwy 17 helicopter visibility reduction below 1 SM NA. Obtain local altimeter setting on CTAF; when not received, use Ponca City altimeter setting and increase all DA 53 feet, all MDA 60 feet and increase LNAV/VNAV all Cats and LNAV Cat C visibility ¼ mile.

**MISSED APPROACH:** Climb to 3000 direct HIGY and on track 192° to YUPUD and hold.

KANSAS CITY CENTER <b>127.8 319.1</b>	UNICOM <b>122.8 (CTAF)</b>
--	-------------------------------



Procedure NA for arrivals at GULLI on V140 eastbound.



CATEGORY	A	B	C	D
LPV DA	1244-1	250 (300-1)		NA
LNAV/VNAV DA	1434-1½	440 (500-1½)		NA
LNAV MDA	1360-1	366 (400-1)	1360-1½ 366 (400-1½)	NA

SC-1, 23 MAR 2023 to 20 APR 2023

SC-1, 23 MAR 2023 to 20 APR 2023