

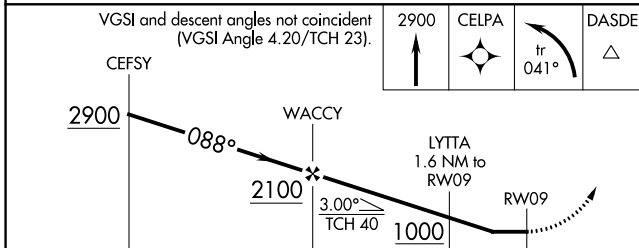
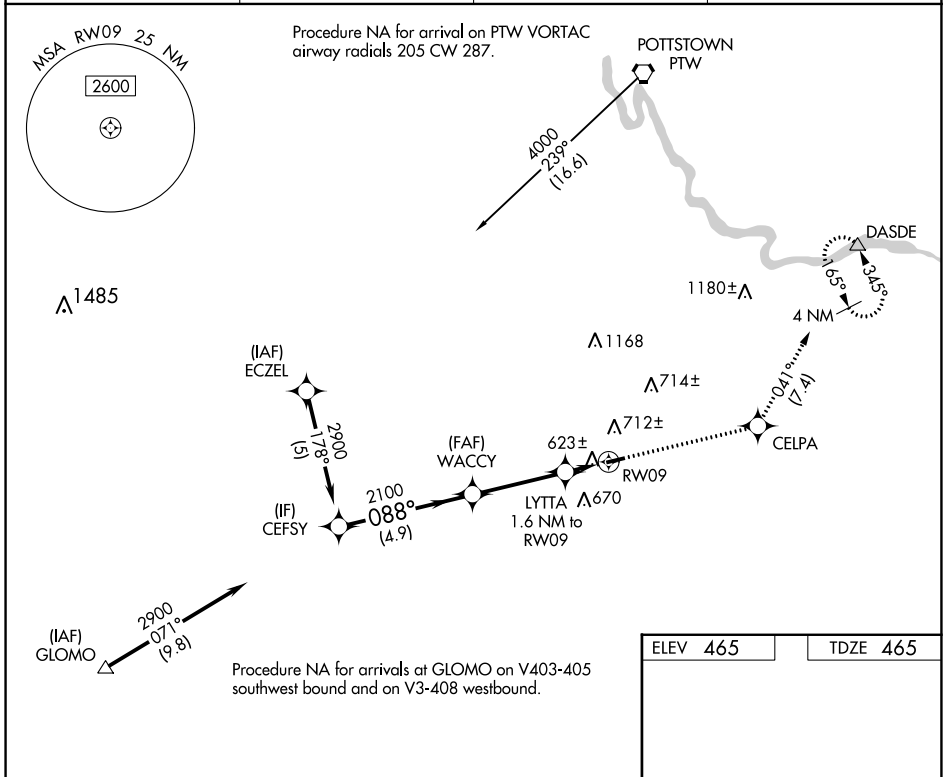
APP CRS	Rwy Idg	3222
088°	TDZE	465
	Apt Elev	465

RNAV (GPS) Z RWY 9

BRANDYWINE RGNL (OQN)

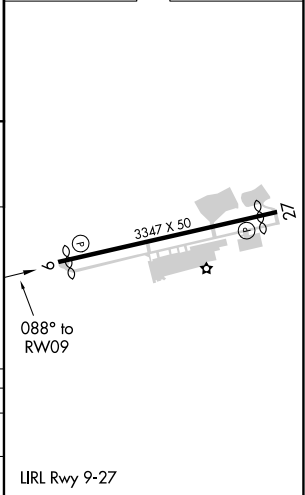
RNP APCH-GPS.	MISSED APPROACH: Climb to 2900 direct CELPA and left turn on track 041° to DASDE and hold.
<p>▼ Rwy 9 helicopter visibility reduction below 1 SM NA.</p> <p>▲ Procedure NA at night.</p>	

AWOS-3T 121.4	PHILADELPHIA APP CON 124.35 319.15	CLNC DEL 125.6	UNICOM 123.075 (CTAF)
-------------------------	--	--------------------------	---------------------------------



ELEV 465	TDZE 465
----------	----------

CATEGORY	A	B	C	D
LNAV MDA	880-1	415 (500-1)		NA
C CIRCLING	1020-1	555 (600-1)		NA



NE-4, 23 MAR 2023 to 20 APR 2023

NE-4, 23 MAR 2023 to 20 APR 2023