

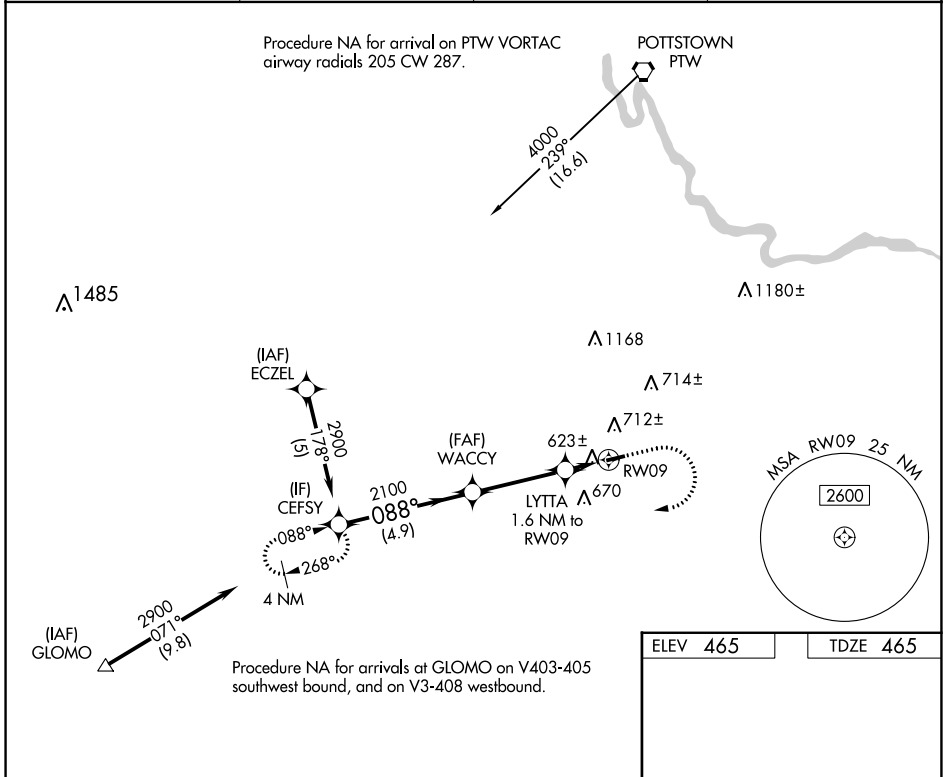
APP CRS	Rwy Idg	<b>3222</b>
<b>088°</b>	TDZE	<b>465</b>
	Apt Elev	<b>465</b>

# RNAV (GPS) Y RWY 9

BRANDYWINE RGNL (OQN)

RNP APCH-GPS.		MISSED APPROACH: Climb to 1000 then climbing right turn to 2900 direct CEFSY and hold.	
<p><b>▽</b> Rwy 9 helicopter visibility reduction below 1 SM NA.  <b>▲</b> Procedure NA at night.</p>			

AWOS-3T <b>121.4</b>	PHILADELPHIA APP CON <b>124.35 319.15</b>	CLNC DEL <b>125.6</b>	UNICOM <b>123.075</b> (CTAF)
-------------------------	--	--------------------------	---------------------------------



NE-4, 23 MAR 2023 to 20 APR 2023

NE-4, 23 MAR 2023 to 20 APR 2023

VGSi and descent angles not coincident (VGSi Angle 4.20/TCH 23).				1000	2900	CEFSY
	4.9 NM	3.4 NM	1.6 NM			
CATEGORY	A	B	C	D		
RNAV MDA	880-1	415 (500-1)		NA		
<b>C</b> CIRCLING	1020-1	555 (600-1)		NA		

