

BONHAM, TEXAS

AL-6722 (FAA)

22307

WAAS CH 99523 W17A	APP CRS 176°	Rwy Idg TDZE Apt Elev	4000 618 618
--	------------------------	-----------------------------	---

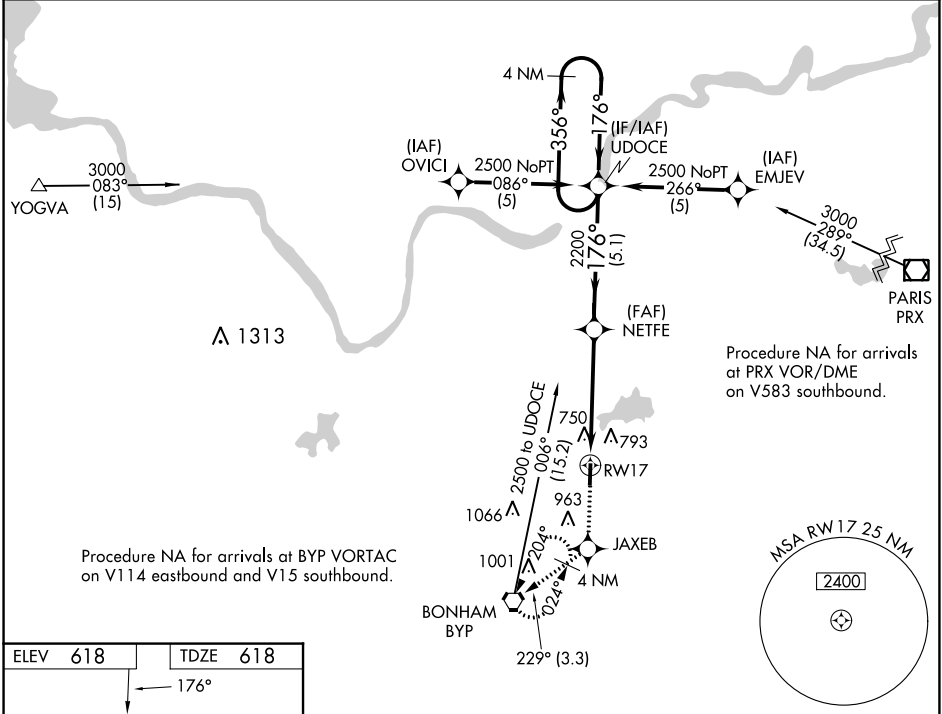
RNAV (GPS) RWY 17

JONES FLD (F00)

NA Baro-VNAV NA. When local altimeter setting not received, use Durant altimeter setting.
DME/DME RNP-0.3 NA.

MISSED APPROACH: Climb to 2500 direct JAXEB and on track 229° to BYP VORTAC and hold.

AWOS-3 PT 118.05	FORT WORTH CENTER 127.6 254.3	UNICOM 122.8(CTAF)
----------------------------	---	------------------------------



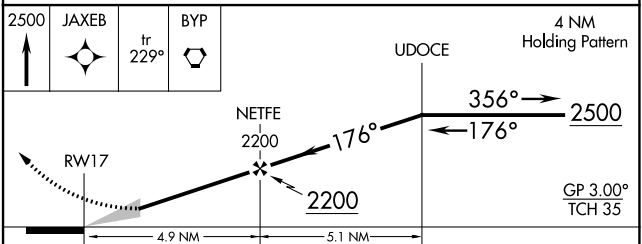
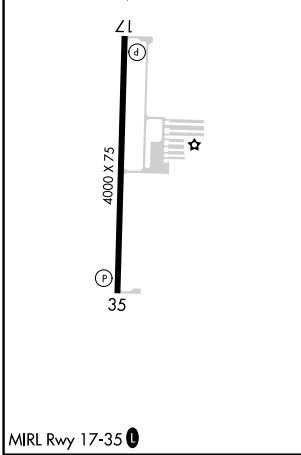
Procedure NA for arrivals at BYP VORTAC on V114 eastbound and V15 southbound.

Procedure NA for arrivals at PRX VOR/DME on V583 southbound.

SC-2, 23 MAR 2023 to 20 APR 2023

SC-2, 23 MAR 2023 to 20 APR 2023

ELEV 618	TDZE 618
----------	----------



CATEGORY	A	B	C	D
LPV DA	906-1	288 (300-1)		NA
LNAV/VNAV DA	1030-1 ³ / ₈	412 (500-1 ³ / ₈)		NA
LNAV MDA	1180-1	562 (600-1)		NA
CIRCLING	1240-1 622 (700-1)	1400-1 782 (800-1)		NA

BONHAM, TEXAS
Amdt 2B 20MAY21

33°37'N-96°11'W

RNAV (GPS) RWY 17

JONES FLD (F00)