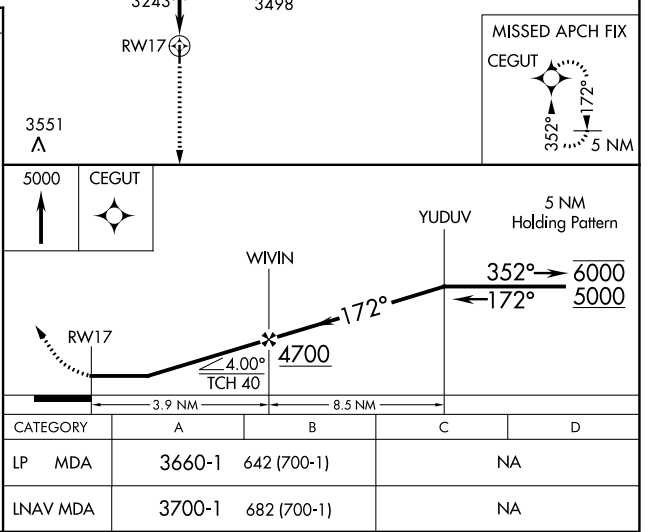
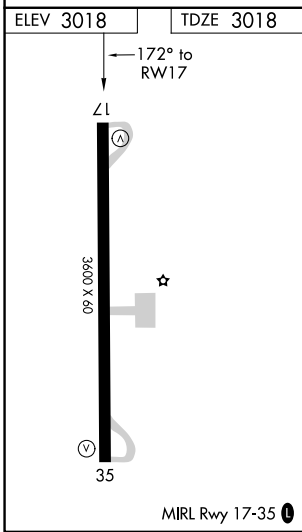
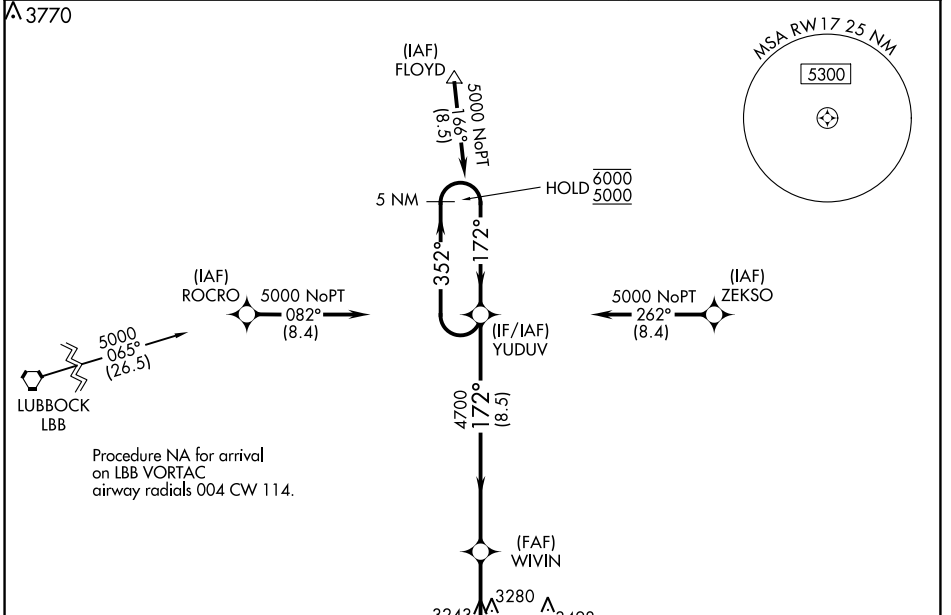


WAAS CH 82722 W17A	APP CRS 172°	Rwy Idg TDZE Apt Elev	3600 3018 3018
--	------------------------	-----------------------------	---

RNAV (GPS) RWY 17

CROSBYTON MUNI (8F3)

RNP APCH.		MISSED APPROACH: Climb to 5000 direct CEGUT and hold.	
<p>Procedure NA at night. Rwy 17 helicopter visibility reduction below 1 SM NA. Use Lubbock altimeter setting.</p>			
LBB ASOS 125.3	LUBBOCK APP CON 119.2 351.8	UNICOM 122.8 (CTAF) 0	



SC-2, 23 MAR 2023 to 20 APR 2023

SC-2, 23 MAR 2023 to 20 APR 2023