

|  |                        |                             |   |
|--|------------------------|-----------------------------|---|
| WAAS<br>CH <b>70504</b><br><b>W36A</b> | APP CRS<br><b>356°</b> | Rwy Idg<br>TDZE<br>Apt Elev | <b>5201</b><br><b>1277</b><br><b>1277</b> |
|--|------------------------|-----------------------------|---|

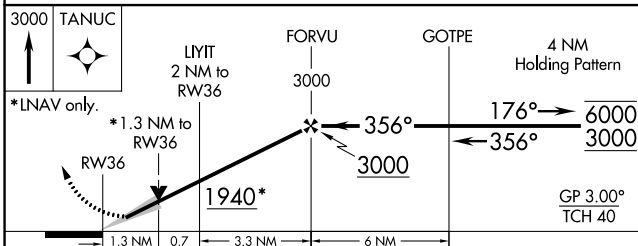
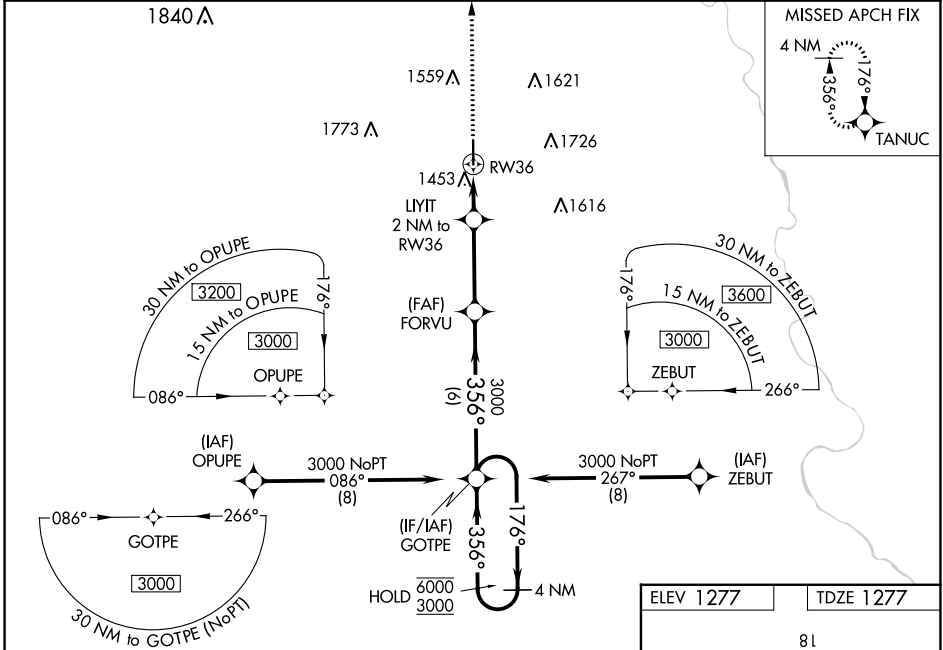
# RNAV (GPS) RWY 36

WELLINGTON MUNI (E/GT)

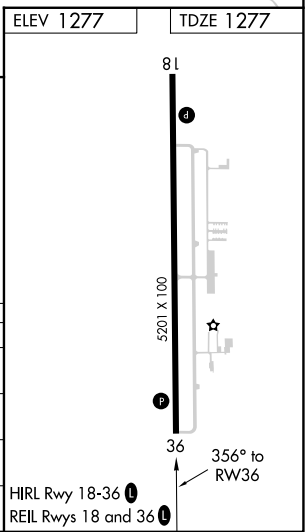
RNP APCH.  
 ▽ NA Baro-VNAV and VDP NA when using Wichita Dwight D Eisenhower Ntl altimeter setting. For uncompensated Baro-VNAV systems, LNAV/VNAV NA below -17°C or above 54°C. When local altimeter setting not received, use Wichita Dwight D Eisenhower Ntl altimeter setting: increase LPV DA to 1581 feet; increase LNAV/VNAV DA to 1668 feet and all visibilities 1/8 SM; increase all MDA 60 feet and Circling Cat C/D visibility 1/4 SM.

MISSED APPROACH:  
 Climb to 3000 direct TANUC and hold.

|                           |                                  |  |
|---------------------------|----------------------------------|--|
| AWOS-3P<br><b>118.875</b> | WICHITA APP CON<br><b>134.85</b> | UNICOM<br><b>122.8</b> (CTAF) <b>0</b> |
|---------------------------|----------------------------------|--|



| CATEGORY     | A      | B           | C               | D               |
|--------------|--------|-------------|-----------------|-----------------|
| LPV DA       |        | 1527-1      | 250 (300-1)     |                 |
| LNAV/VNAV DA |        | 1614-1      | 337 (400-1)     |                 |
| LNAV MDA     | 1720-1 | 443 (500-1) | 1720-1 3/8      | 443 (500-1 3/8) |
| CIRCLING     | 1760-1 | 483 (500-1) | 2040-2 1/4      | 2140-2 3/4      |
|              |        |             | 763 (800-2 1/4) | 863 (900-2 3/4) |



NC-2, 23 MAR 2023 to 20 APR 2023

NC-2, 23 MAR 2023 to 20 APR 2023