

WAAS CH <b>53530</b> <b>W32A</b>	APP CRS <b>317°</b>	Rwy Idg TDZE <b>1082</b> Apt Elev <b>1083</b>
----------------------------------------	------------------------	-----------------------------------------------------

# RNAV (GPS) RWY 32

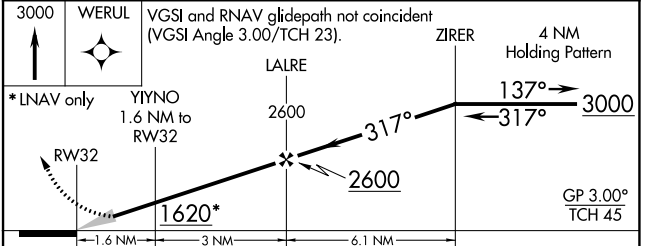
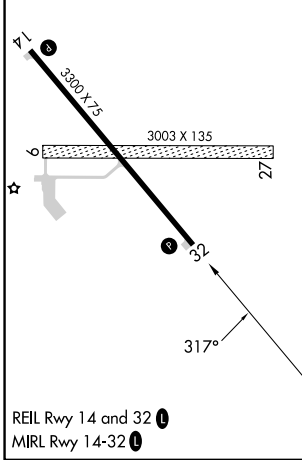
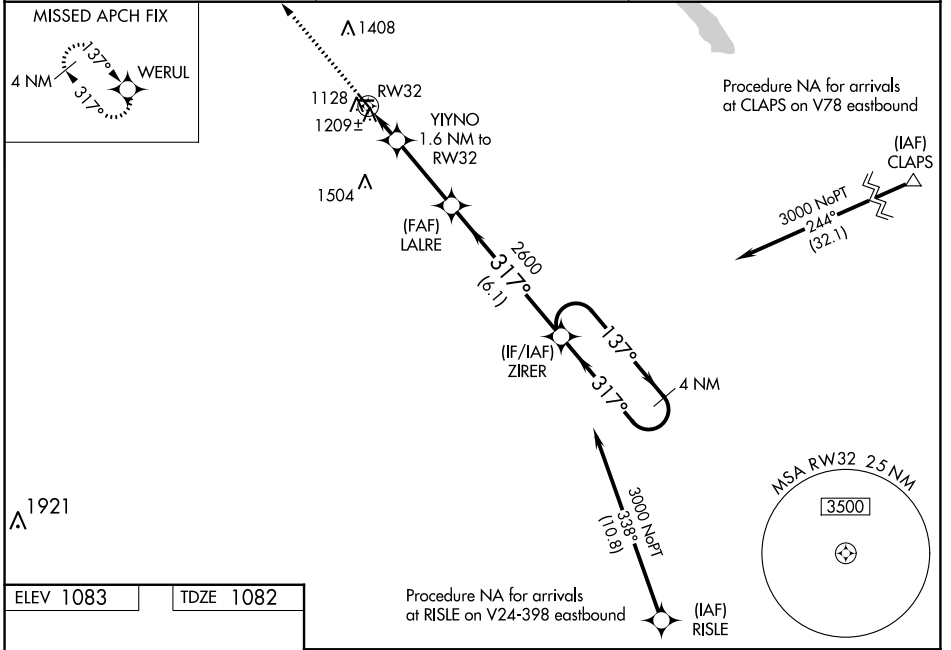
LAC QUI PARLE COUNTY (DXX)

RNP APCH.

Baro-VNAV NA when using Appleton Muni altimeter setting. For uncompensated Baro-VNAV systems, LNAV/VNAV NA below -17°C or above 54°C. When local altimeter setting not received, use Appleton Muni altimeter setting; increase LPV DA to 1329 feet; increase LNAV/VNAV DA to 1409 feet and visibility 1/4 SM; increase all MDAs 60 feet and Circling Cat C visibility 1/2 SM. Circling NA to Rwy 9 and 27.

MISSED APPROACH: Climb to 3000 direct WERUL and hold.

AWOS-3 <b>118.975</b>	MINNEAPOLIS CENTER <b>128.5 306.2</b>	UNICOM <b>122.8 (CTAF)</b>
--------------------------	------------------------------------------	-------------------------------



CATEGORY	A	B	C	D
LPV DA	1282-1 200 (200-1)			NA
LNAV/VNAV DA	1363-1 281 (300-1)			NA
LNAV MDA	1460-1	378 (400-1)	1460-1 1/8 378 (400-1 1/8)	NA
CIRCLING	1640-1	557 (600-1)	1820-2 737 (800-2)	NA

NC-1, 23 MAR 2023 to 20 APR 2023

NC-1, 23 MAR 2023 to 20 APR 2023