

APP CRS	Rwy Idg	3299
320°	TDZE	297
	Apt Elev	297

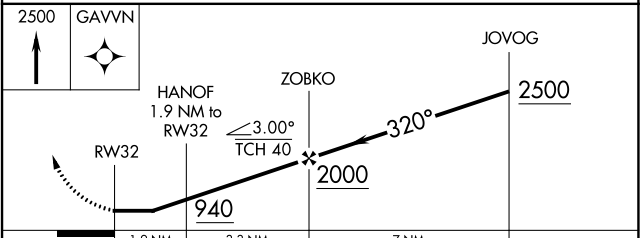
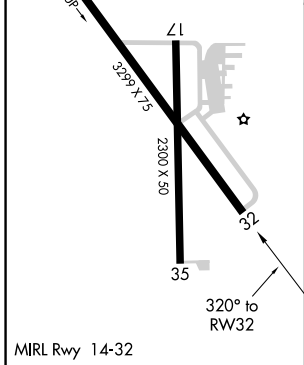
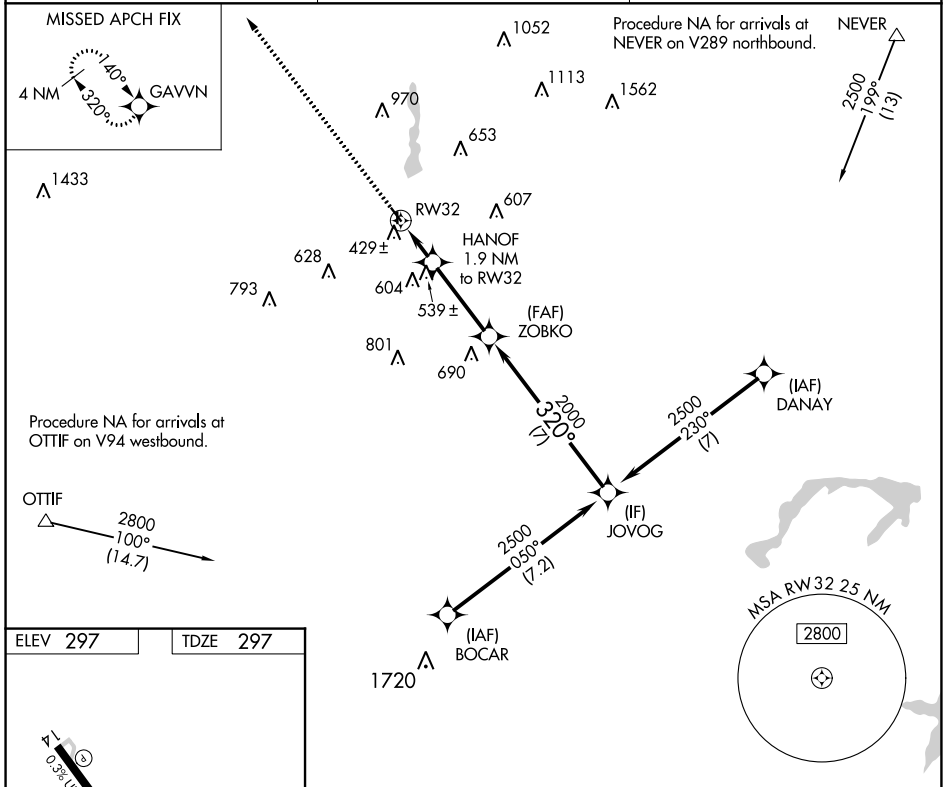
RNAV (GPS) RWY 32

GLADEWATER MUNI (Ø7F)

NA Rwy 32 helicopter visibility reduction below 1 SM NA. DME/DME RNP-0.3 NA. Procedure NA at night. Use Gilmer altimeter setting, when not received use Longview altimeter setting and increase all MDA 20 feet and increase LNAV Cat C visibility 1/8 SM.

MISSED APPROACH: Climb to 2500 direct GAVVN and hold.

JXI AWOS-3PT 120.25	LONGVIEW APP CON ★ 124.275 257.975	CTAF 122.9
-------------------------------	--	----------------------



CATEGORY	A	B	C	D
LNAV MDA	720-1	423 (500-1)	720-1¼ 423 (500-1¼)	NA
CIRCLING	880-1 583 (600-1)	1000-1 703 (800-1)	1000-2 703 (800-2)	NA

SC-2, 23 MAR 2023 to 20 APR 2023

SC-2, 23 MAR 2023 to 20 APR 2023