

APP CRS
140°

Rwy Idg **3299**
TDZE **297**
Apt Elev **297**

RNAV (GPS) RWY 14

GLADEWATER MUNI (Ø7F)

RNP APCH.

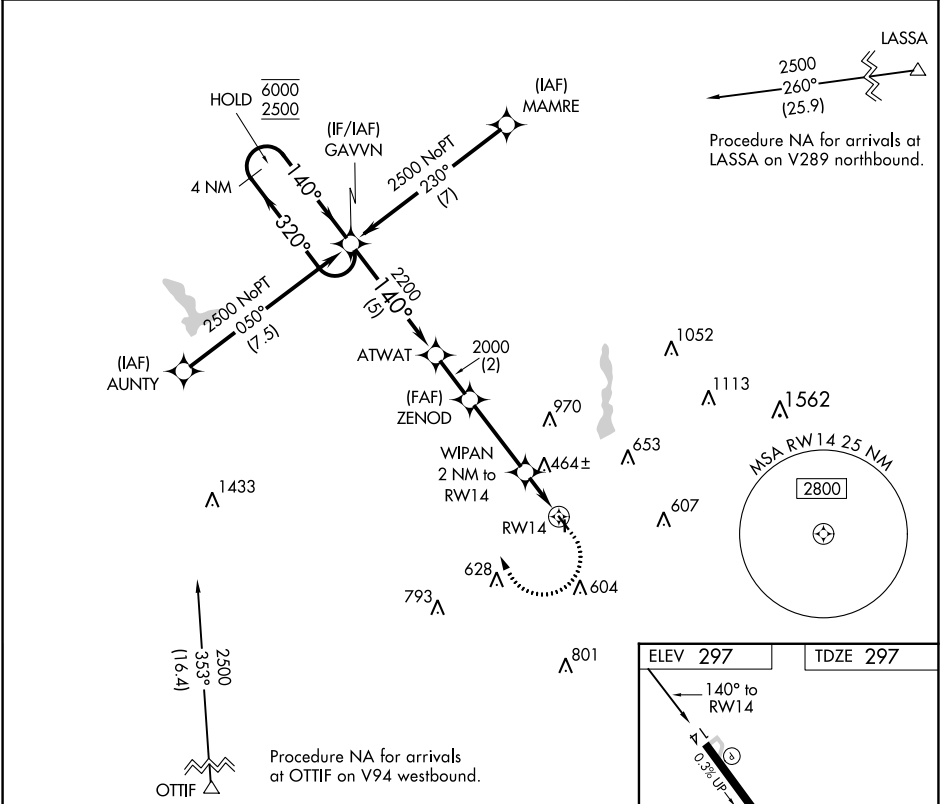
▼ Procedure NA at night. Rwy 14 helicopter visibility reduction below 1 SM NA.
▲ NA Use Gilmer altimeter setting, when not received use Longview altimeter setting and increase all MDA 20 feet and increase LNAV Cat C visibility ½ SM.

MISSED APPROACH:
Climbing right turn to 2500 direct GAVVN and hold.

JXI AWOS-3PT
120.25

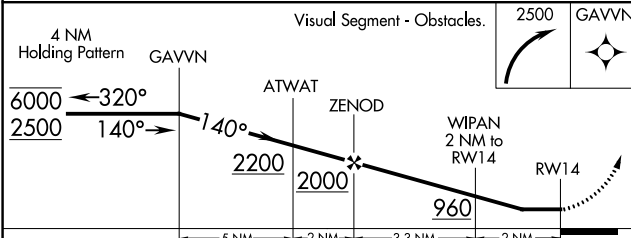
LONGVIEW APP CON ★
124.275 257.975

CTAF
122.9



SC-2, 23 MAR 2023 to 20 APR 2023

SC-2, 23 MAR 2023 to 20 APR 2023



CATEGORY	A	B	C	D
LNAV MDA	800-1	503 (600-1)	800-1 3/8 503 (600-1 3/8)	NA
CIRCLING	880-1 583 (600-1)	1000-1 703 (800-1)	1000-2 703 (800-2)	NA

