

WAAS CH 45709 W06A	APP CRS 060°	Rwy Idg TDZE Apt Elev	5501 526 526
---------------------------------	------------------------	-----------------------------	---

RNAV (GPS) RWY 6

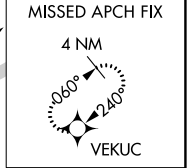
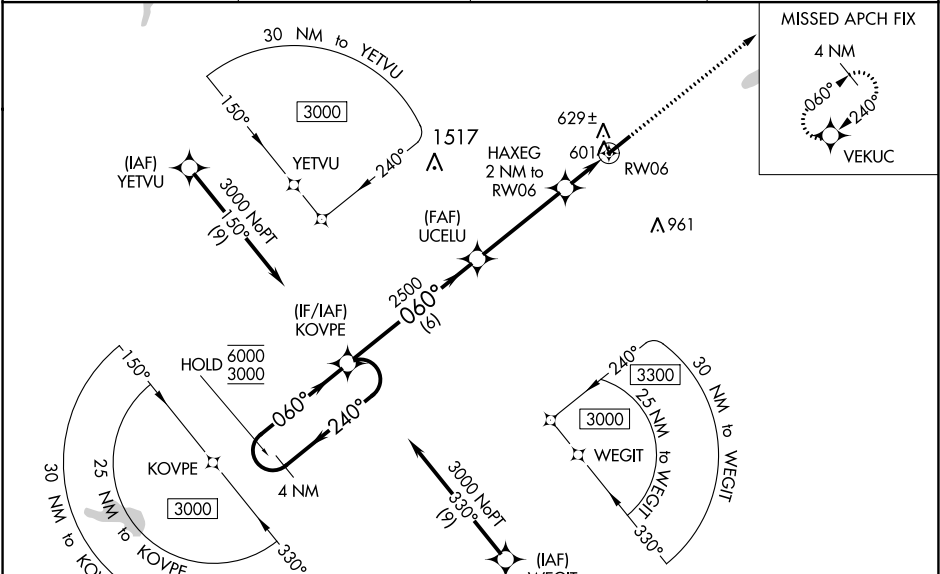
HENDERSON/OXFORD (HNZ)

RNP APCH - GPS.

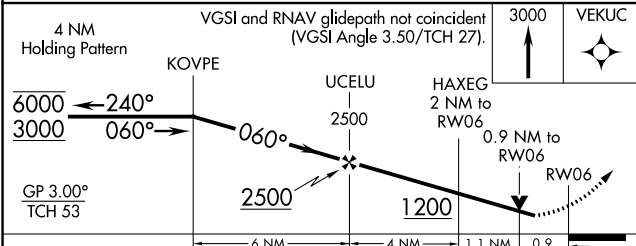
For uncompensated Baro-VNAV systems, LNAV/VNAV NA below -16°C or above 54°C.
 When local altimeter setting not received, use Roxboro altimeter setting: increase all DA to 875 feet and all visibilities 1/8 SM; increase all MDA 80 feet and visibility Cats C and D 1/4 SM. Baro-VNAV and VDP NA when using Roxboro altimeter setting.
 Rwy 6 helicopter visibility reduction below 3/4 SM NA.

MISSED APPROACH: Climb to 3000 direct VEKUC and hold.

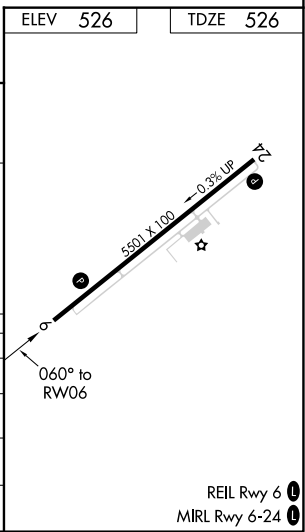
AWOS-3 118.625	RALEIGH APP CON 132.35 256.9	GCO 135.075	UNICOM 122.8(CTAF)
--------------------------	--	-----------------------	------------------------------



ELEV 526	TDZE 526
----------	----------



CATEGORY	A	B	C	D
LPV DA		811-7/8	285 (300-7/8)	
LNAV/VNAV DA		810-7/8	284 (300-7/8)	
LNAV MDA		880-1	354 (400-1)	
CIRCLING	960-1	980-1	1100-1 1/2	1280-2 1/2
	434 (500-1)	454 (500-1)	574 (600-1 1/2)	754 (800-2 1/2)



SE-2, 23 MAR 2023 to 20 APR 2023

SE-2, 23 MAR 2023 to 20 APR 2023