

WAAS CH <b>63009</b> <b>W24A</b>	APP CRS <b>240°</b>	Rwy Idg TDZE Apt Elev	<b>5501</b> <b>523</b> <b>526</b>
--	------------------------	-----------------------------	---

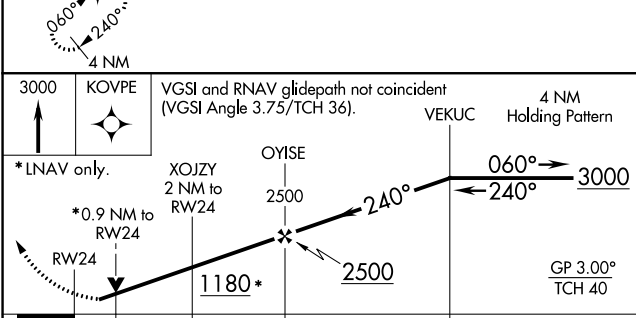
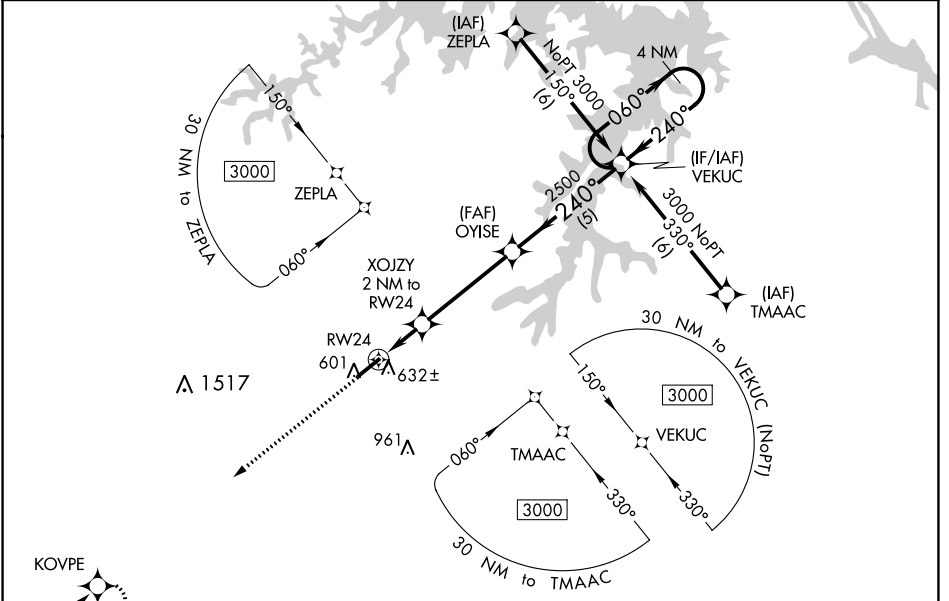
# RNAV (GPS) RWY 24

HENDERSON/OXFORD (HNZ)

**▼** For uncompensated Baro-VNAV systems, LNAV/VNAV NA below -16°C (4°F) or above 54°C (130°F).  
**▲** DME/DME RNP-0.3 NA. When local altimeter setting not received, use Roxboro altimeter setting and increase all DA 64 feet, and all MDA 80 feet; increase LPV all Cats visibility 1/8 mile, LNAV/VNAV all Cats and Circling Cats C and D visibility 1/4 mile, and LNAV Cats C and D 3/8 mile. Helicopter visibility reduction below 3/4 SM NA. Baro-VNAV and VDP NA when using Roxboro altimeter setting.

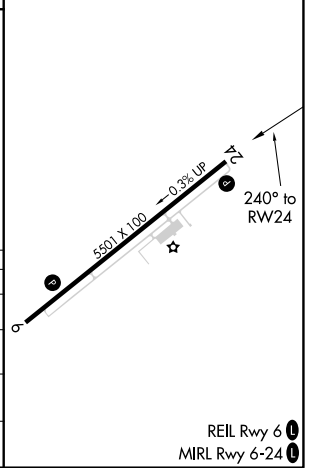
**MISSED APPROACH:**  
Climb to 3000 direct KOVPE and hold.

AWOS-3 <b>118.625</b>	RALEIGH APP CON <b>132.35 256.9</b>	GCO <b>135.075</b>	UNICOM <b>122.8(CTAF) 0</b>
--------------------------	--	-----------------------	--------------------------------



ELEV 526	TDZE 523
----------	----------

CATEGORY	A	B	C	D
LPV DA		773-7/8	250 (300-7/8)	
LNAV/VNAV DA		813-1	290 (300-1)	
LNAV MDA		900-1	377 (400-1)	
<b>C</b> CIRCLING	960-1 434 (500-1)	980-1 454 (500-1)	1100-1½ 574 (600-1½)	1280-2½ 754 (800-2½)



SE-2, 23 MAR 2023 to 20 APR 2023

SE-2, 23 MAR 2023 to 20 APR 2023