

LOC I-HNZ 109.75	APP CRS 060°	Rwy Idg 5501
		TDZE 526
		Apt Elev 526

LOC RWY 6

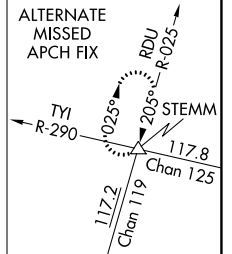
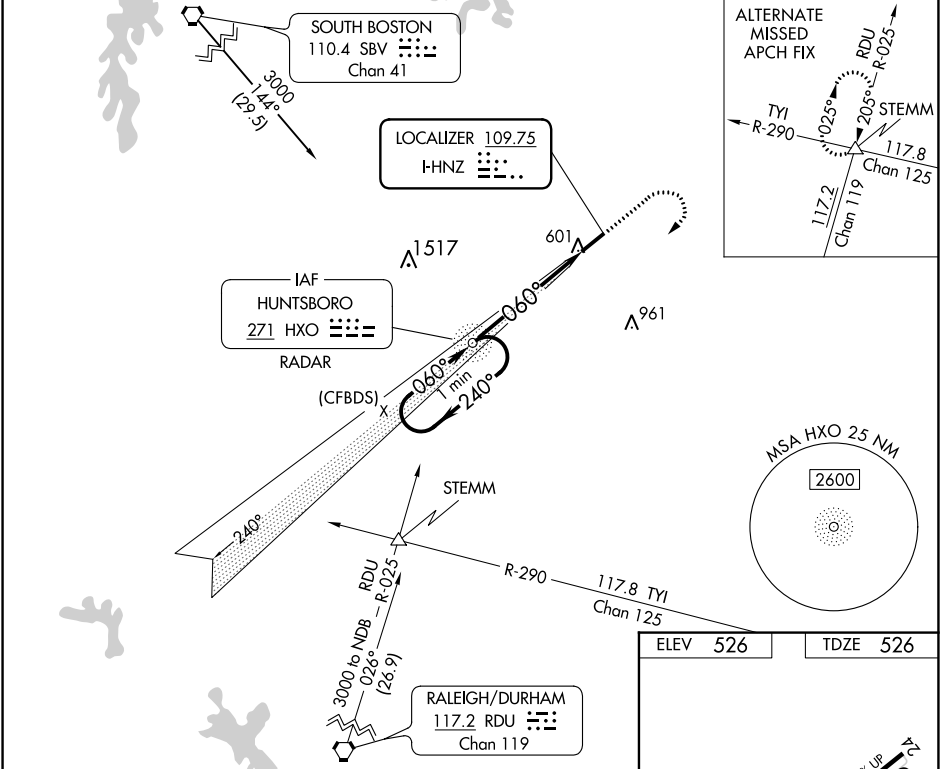
HENDERSON/OXFORD (HNZ)

ADF or RADAR required. ADF or RADAR required for procedure entry.

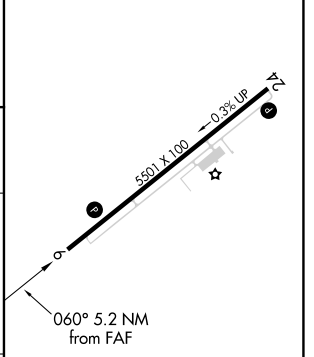
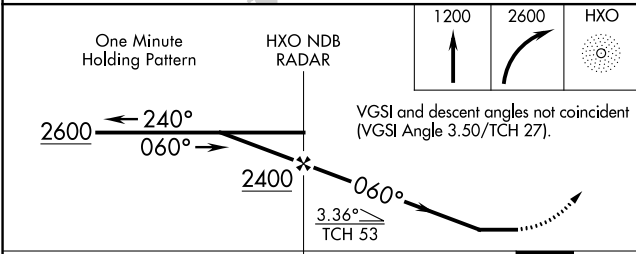
▼ Rwy 6 helicopter visibility reduction below ¼ SM NA. When local altimeter setting not received, use Roxboro altimeter setting and increase all MDA 80 feet; increase S-6 Cat C/D visibility ½ SM and Circling Cat C and D visibility ¼ SM.

▲ MISSED APPROACH: Climb to 1200 then climbing right turn to 2600 direct HXO NDB/RADAR and hold.

AWOS-3 118.625	RALEIGH APP CON 132.35 256.9	GCO 135.075	UNICOM 122.8(CTAF) 0
--------------------------	--	-----------------------	--------------------------------



ELEV 526	TDZE 526
----------	----------



CATEGORY	A	B	C	D	REIL Rwy 6 0 MIRL Rwy 6-24 0
S-6	980-1	454 (500-1)	980-1 3/8	454 (500-1 3/8)	
CIRCLING	980-1	454 (500-1)	1100-1 1/2 574 (600-1 1/2)	1280-2 1/2 754 (800-2 1/2)	FAF to MAP 5.2 NM
					Knots: 60 90 120 150 180 Min:Sec: 5:12 3:28 2:36 2:05 1:44

SE-2, 23 MAR 2023 to 20 APR 2023

SE-2, 23 MAR 2023 to 20 APR 2023