

WAAS CH 50543 W31B	APP CRS 295°	Rwy Idg TDZE Apt Elev	5000 957 963
--	------------------------	-----------------------------	---

RNAV (GPS) Z RWY 31

GRANT COUNTY (W99)

RNP APCH.

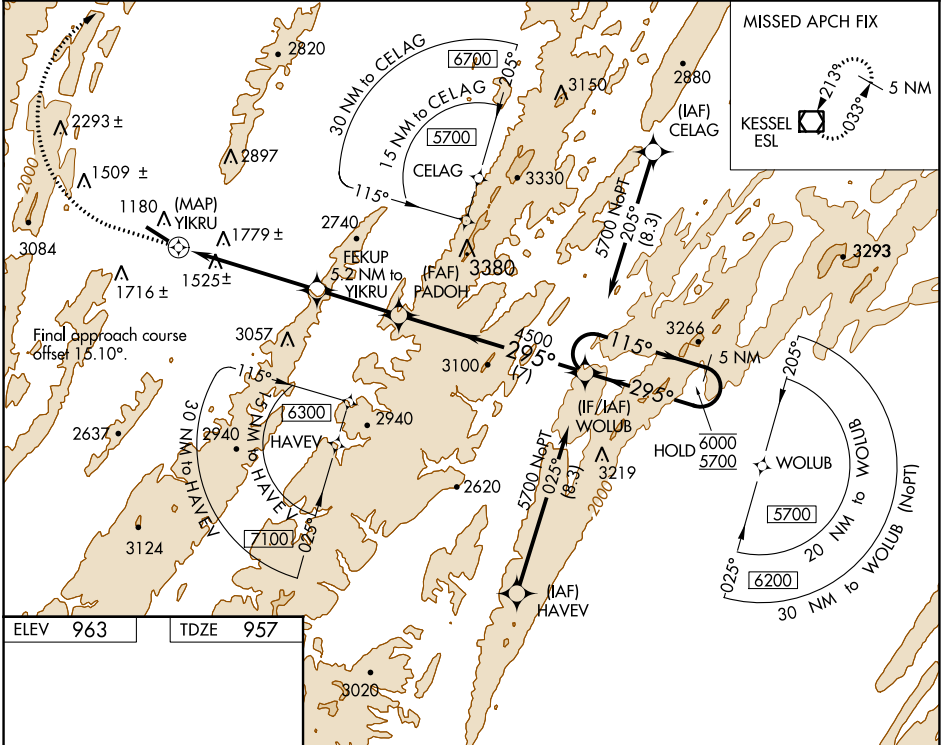
NA Rwy 31 helicopter visibility reduction below 3/4 SM NA. When local altimeter setting not received, procedure NA.

-8°C

MISSED APPROACH: Climb to 2200 then climbing right turn to 5000 direct ESL VOR/DME and hold.

*Missed approach requires minimum climb of 410 feet per NM to 3300, if unable to meet climb gradient, see RNAV (GPS) Y Rwy 31.

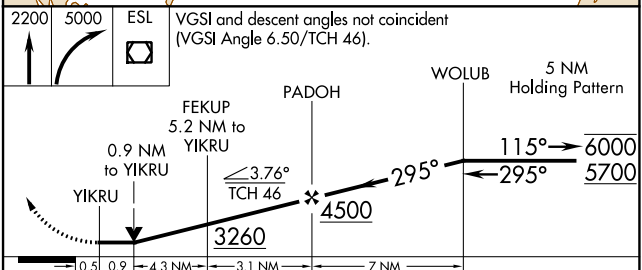
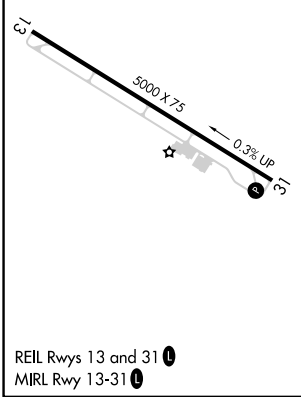
AWOS-3 124.475	WASHINGTON CENTER 133.55 322.55	UNICOM 122.8 (CTAF)
--------------------------	---	-------------------------------



NE-4, 23 MAR 2023 to 20 APR 2023

NE-4, 23 MAR 2023 to 20 APR 2023

ELEV 963	TDZE 957
----------	----------



CATEGORY	A	B	C	D
*LP MDA	1980-1¼ 1023 (1100-1¼)	1980-1½ 1023 (1100-1½)	1980-3 1023 (1100-3)	NA
*LNAV MDA	2120-1¼ 1163 (1200-1¼)	2120-1½ 1163 (1200-1½)	2120-3 1163 (1200-3)	NA