

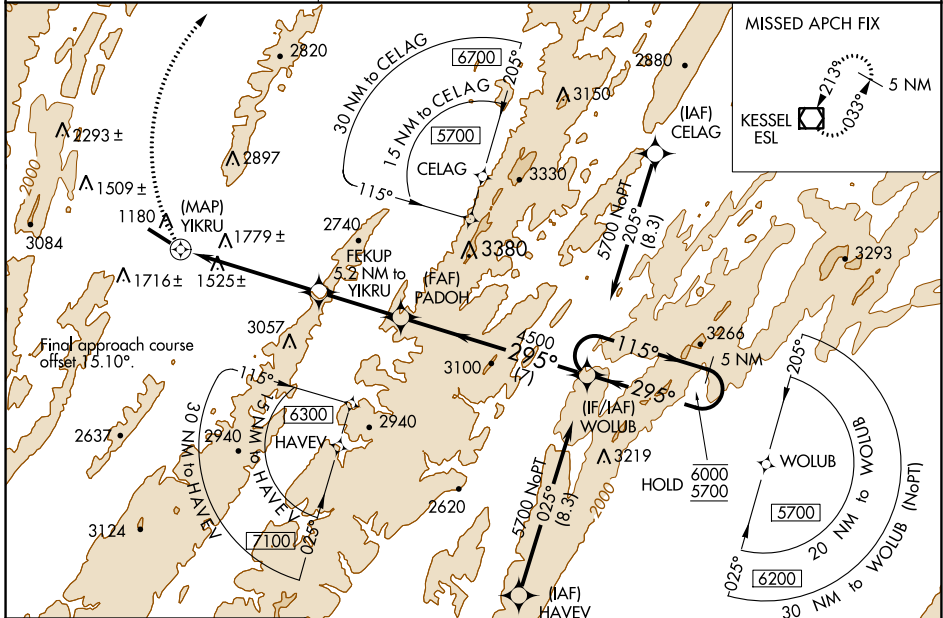
WAAS CH <b>58131</b> <b>W31A</b>	APP CRS <b>295°</b>	Rwy Idg TDZE Apt Elev	<b>5000</b> <b>957</b> <b>963</b>
--	------------------------	-----------------------------	---

# RNAV (GPS) Y RWY 31

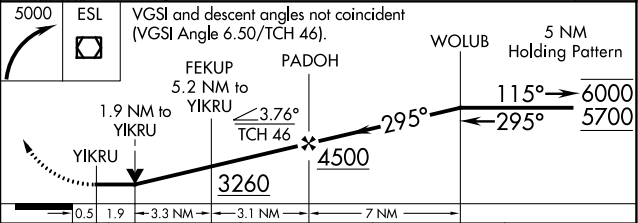
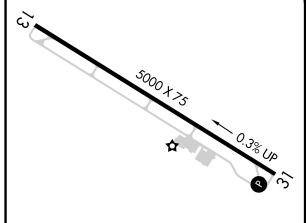
GRANT COUNTY (W99)

RNP APCH.	MISSED APPROACH: Climbing right turn to 5000 direct ESL VOR/DME and hold.
NA -8°C	Rwy 31 helicopter visibility reduction below 3/4 SM NA. When local altimeter setting not received, procedure NA.

AWOS-3 <b>124.475</b>	WASHINGTON CENTER <b>133.55 322.55</b>	UNICOM <b>122.8 (CTAF)</b>
--------------------------	---	-------------------------------



ELEV 963	TDZE 957
----------	----------



CATEGORY	A	B	C	D
LP MDA	2620-1¼ 1663 (1700-1¼)	2620-1½ 1663 (1700-1½)	2620-3 1663 (1700-3)	NA
LNAV MDA	2740-1¼ 1783 (1800-1¼)	2740-1½ 1783 (1800-1½)	2740-3 1783 (1800-3)	NA
CIRCLING	2740-1¼ 1777 (1800-1¼)	2740-1½ 1777 (1800-1½)	2880-3 1917 (2000-3)	NA

NE-4, 23 MAR 2023 to 20 APR 2023

NE-4, 23 MAR 2023 to 20 APR 2023