

APP CRS	Rwy Idg	N/A
059°	TDZE	N/A
	Apt Elev	669

RNAV (GPS)-B

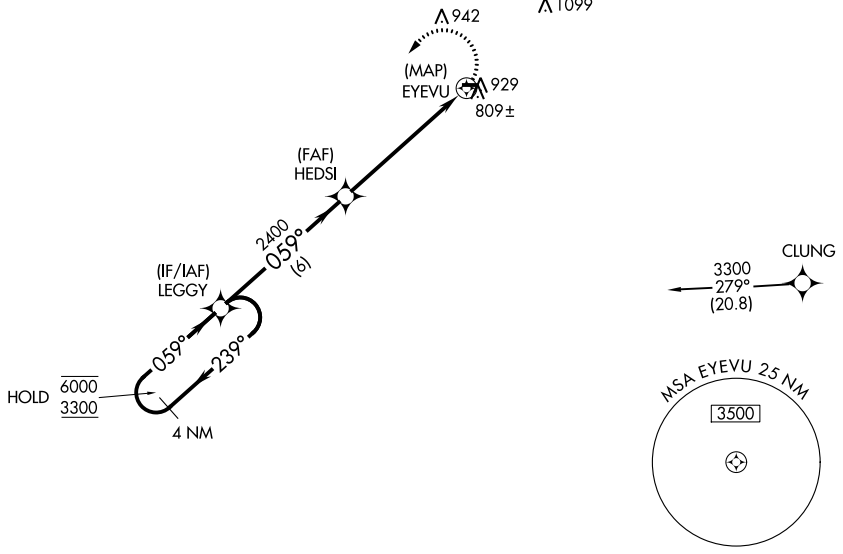
PINE HILL (9G6)

RNP APCH - GPS

NA Rwy 10 and 28 helicopter visibility reduction below 1 SM NA. Use Buffalo Niagara Intl altimeter setting; when not received, use Niagara Falls Intl altimeter setting and increase all MDA 20 feet. Procedure NA at night.

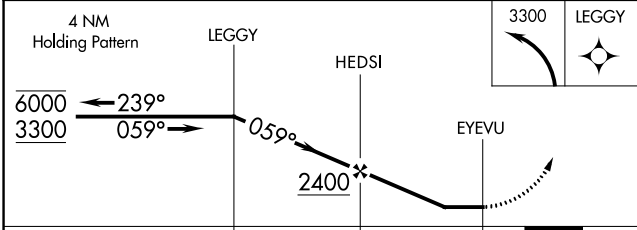
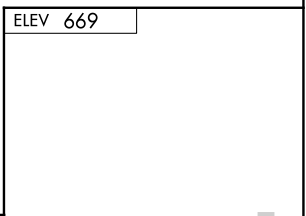
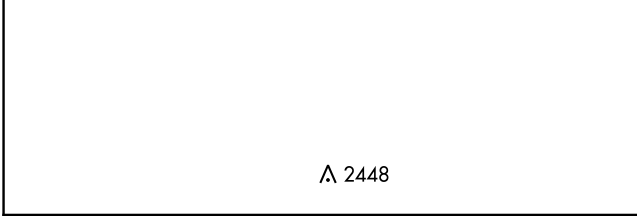
MISSED APPROACH: Climbing left turn to 3300 direct LEGGY and hold.

BUF AWOS 135.35	BUFFALO APP CON 126.15 263.125	UNICOM 123.0 (CTAF) 0
---------------------------	--	---------------------------------

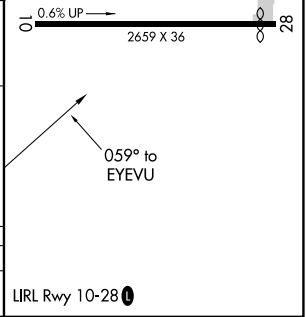


NE-2, 23 MAR 2023 to 20 APR 2023

NE-2, 23 MAR 2023 to 20 APR 2023



CATEGORY	A	B	C	D
C CIRCLING	1360-1	691 (700-1)	NA	NA



LIRL Rwy 10-28 0