

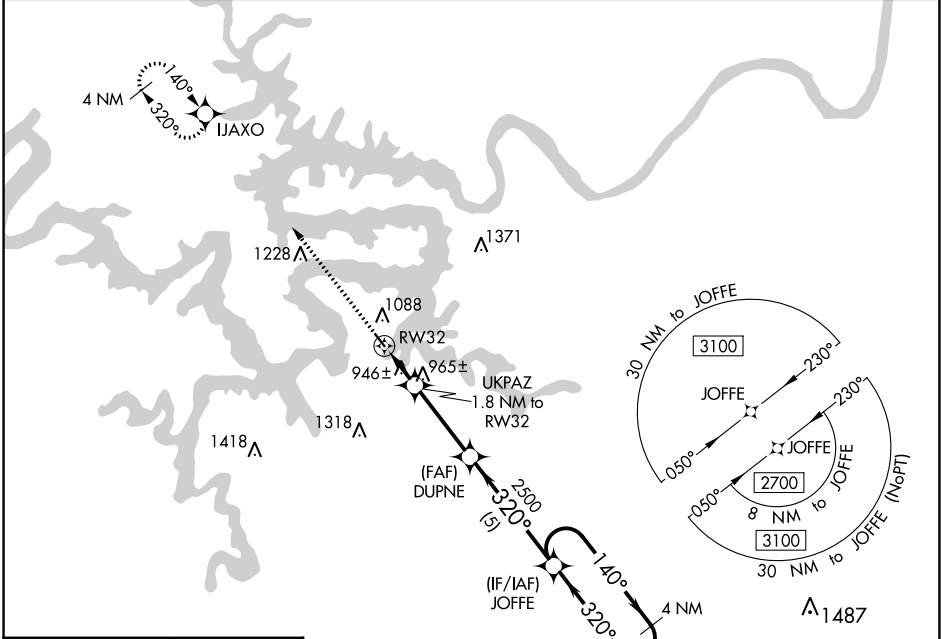
WAAS CH <b>86832</b> <b>W32A</b>	APP CRS <b>320°</b>	Rwy Idg <b>3205</b> TDZE <b>875</b> Apt Elev <b>876</b>
--	------------------------	---

# RNAV (GPS) RWY 32

GRAND GLAIZE-OSAGE BEACH (K15)

<p><b>NA</b> DME/DME RNP-0.3 NA. Use Kaiser Lake Ozark altimeter setting; when not received, use Camden ton altimeter setting and increase all MDA 40 feet. Procedure NA at night. Helicopter visibility reduction below 1 SM NA.</p>	<p>MISSED APPROACH: Climb to 2700 direct IJAXO and hold.</p>
---	--

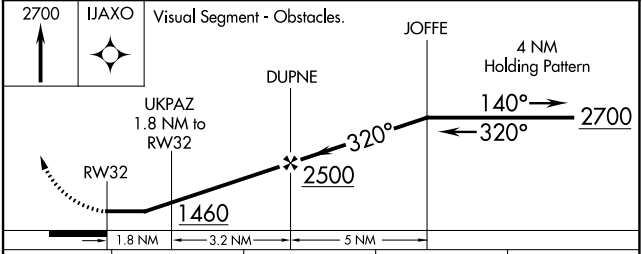
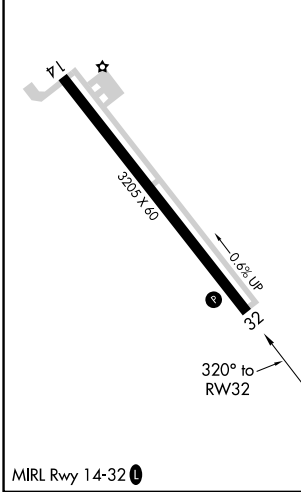
<p>MIZZU APP CON <b>124.1 353.925</b></p>	<p>UNICOM <b>122.8 (CTAF) 1</b></p>
---	---



NC-3, 23 MAR 2023 to 20 APR 2023

NC-3, 23 MAR 2023 to 20 APR 2023

ELEV 876	TDZE 875
----------	----------



CATEGORY	A	B	C	D
LP MDA	1220-1	345 (400-1)		NA
LNAV MDA	1240-1	365 (400-1)		NA
CIRCLING	1420-1	544 (600-1)		NA