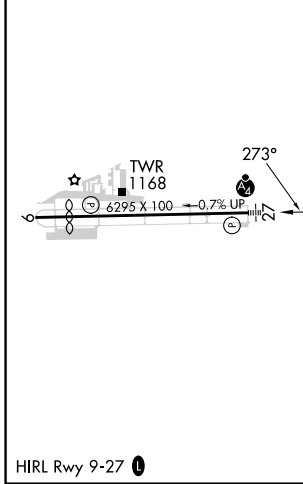
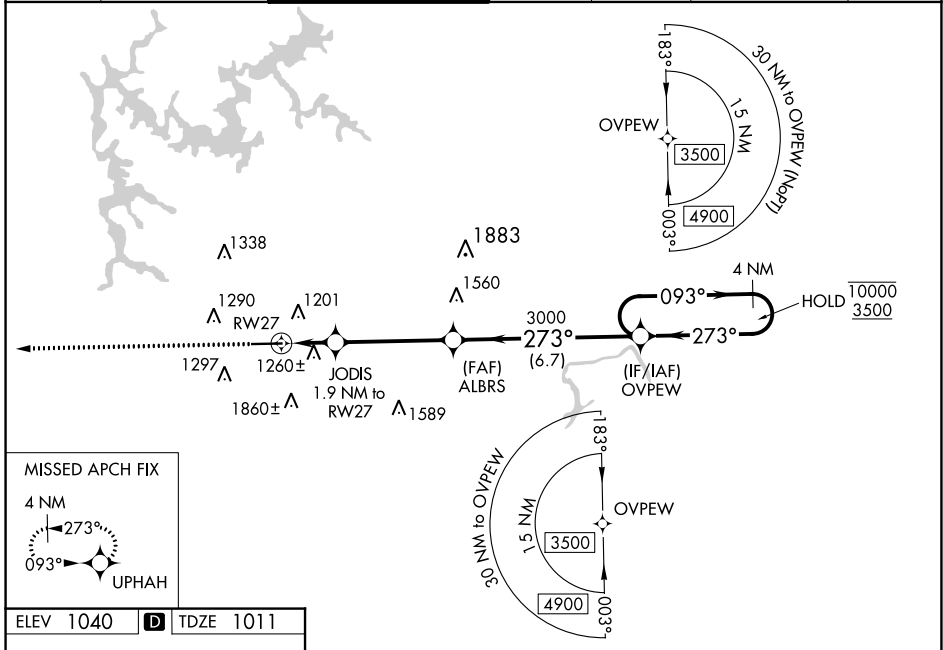


WAAS CH 97308 W27A	APP CRS 273°	Rwy Idg TDZE 1011 Apt Elev 1040	5374
--	------------------------	---	-------------

RNAV (GPS) RWY 27

COBB COUNTY INTL/MCCOLLUM FLD (RYY)

RNP APCH-GPS.				MALSF		MISSED APPROACH: Climb to 3500 direct UPHAH and hold.	
<p>⚠ Inop table does not apply to LPV. For uncompensated Baro-VNAV systems, LNAV/VNAV NA below -17°C or above 54°C. For inop ALS, increase LNAV/VNAV all Cats and LNAV Cats C and D visibility to 1½ SM. Circling Rwy 9 NA at night.</p>							
ATIS 128.125	ATLANTA APP CON 121.0 268.7	MCCOLLUM TOWER ★ 125.9 (CTAF) 0	GND CON 119.0	CLNC DEL 119.0	CLNC DEL 121.0 268.7 (When twr closed)	UNICOM 122.7	



3500	UPHAH	4 NM Holding Pattern			
		<p>1.9 NM 4.2 NM 6.7 NM</p>			
CATEGORY	A	B	C	D	
LPV DA	1211-¾		200 (200-¾)		
LNAV/VNAV DA	1520-1¼		509 (500-1¼)		
LNAV MDA	1520-¾	509 (500-¾)	1520-1¼	509 (500-1¼)	
C CIRCLING	1800-1	760 (800-1)	2180-3	1140 (1200-3)	

SE-4, 23 MAR 2023 to 20 APR 2023

SE-4, 23 MAR 2023 to 20 APR 2023