

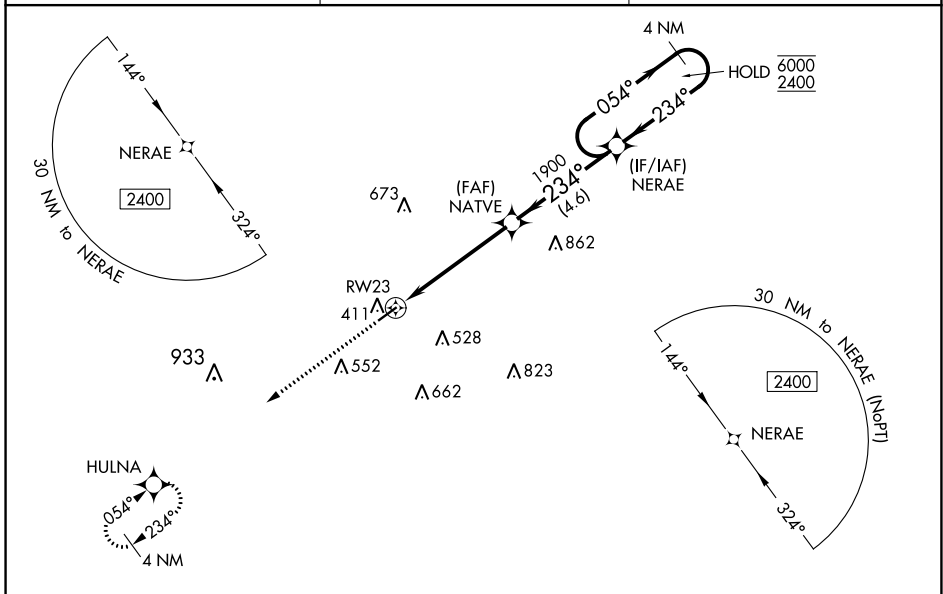
WAAS CH 56236 W23A	APP CRS 234°	Rwy ldg TDZE 5500 270	Apt Elev 270
--	------------------------	---	------------------------

RNAV (GPS) RWY 23

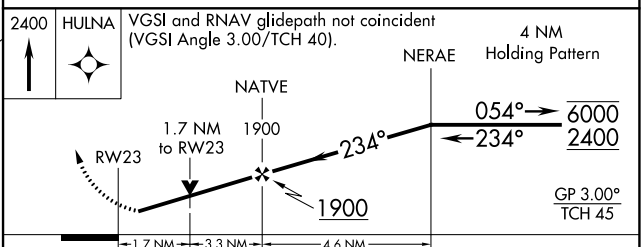
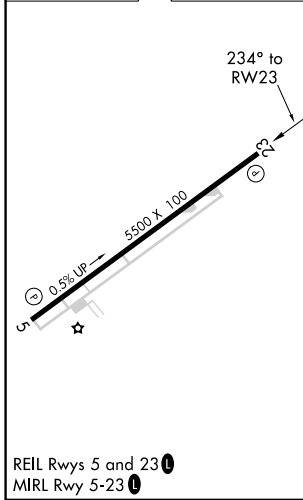
COLUMBIA/MARION COUNTY (ØRØ)

RNP APCH - GPS.	MISSED APPROACH: Climb to 2400 direct HULNA and hold.
<p>▼</p> <p>▲ For uncompensated Baro-VNAV systems, LNAV/VNAV NA below -15°C or above 54°C. Rwy 23 helicopter visibility reduction below ¾ SM NA.</p>	

AWOS-3PT 120.675	HOUSTON CENTER 126.8 327.8	UNICOM 122.8 (CTAF) Ø
----------------------------	--------------------------------------	---------------------------------



ELEV 270	TDZE 270
----------	----------



CATEGORY	A	B	C	D
LPV DA		588-7/8	318 (400-7/8)	
LNAV/VNAV DA		761-13/8	491 (500-13/8)	
LNAV MDA	860-1	590 (600-1)	860-13/4	590 (600-13/4)
<input checked="" type="checkbox"/> CIRCLING	860-1	590 (600-1)	920-13/4	980-21/4
			650 (700-13/4)	710 (800-21/4)

SC-4, 23 MAR 2023 to 20 APR 2023

SC-4, 23 MAR 2023 to 20 APR 2023