

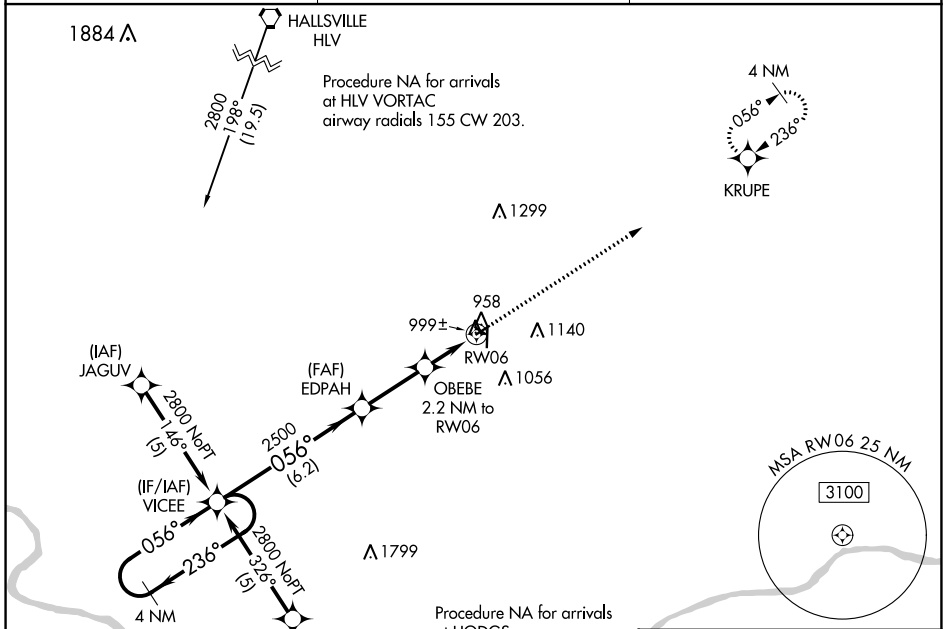
APP CRS	Rwy Idg	3203
056°	TDZE	882
	Apt Elev	887

RNAV (GPS) RWY 6

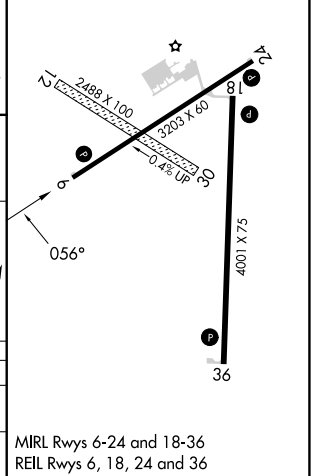
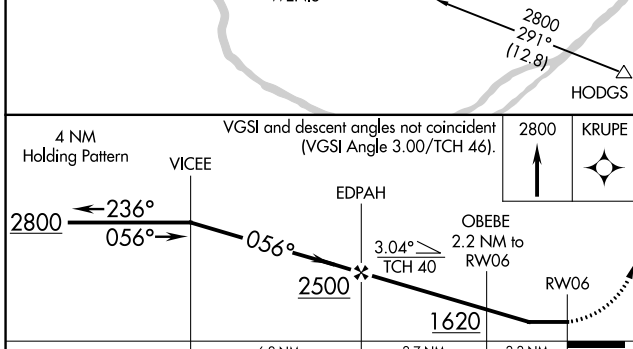
ELTON HENSLEY MEML (F'TT)

RNP APCH.	Use Columbia altimeter setting; when not received, use Jefferson City altimeter setting and increase all MDA 80 feet. Rwy 6 helicopter visibility reduction below 3/4 SM NA. Circling Rwy 18, 24 NA at night.	MISSED APPROACH: Climb to 2800 direct KRUP E and hold.
▼ Use Columbia altimeter setting; when not received, use Jefferson City altimeter setting and increase all MDA 80 feet. Rwy 6 helicopter visibility reduction below 3/4 SM NA. Circling Rwy 18, 24 NA at night.		

COU ASOS 128.45	MIZU APP CON 124.375 353.925	UNICOM 122.7 (CTAF) 0
---------------------------	--	---------------------------------



ELEV 887	TDZE 882
----------	----------



CATEGORY	A	B	C	D
LNVA MDA	1300-1	418 (500-1)	1300-1 1/4 418 (500-1 1/4)	NA
CIRCLING	1380-1 493 (500-1)	1480-1 593 (600-1)	1560-2 673 (700-2)	NA

MIRL Rwy 6-24 and 18-36
 REIL Rwy 6, 18, 24 and 36

NC-3, 23 MAR 2023 to 20 APR 2023

NC-3, 23 MAR 2023 to 20 APR 2023