

WAAS CH 72626 W05A	APP CRS 047°	Rwy Idg TDZE 12 Apt Elev 13	4001
--	------------------------	---	-------------

RNAV (GPS) RWY 5

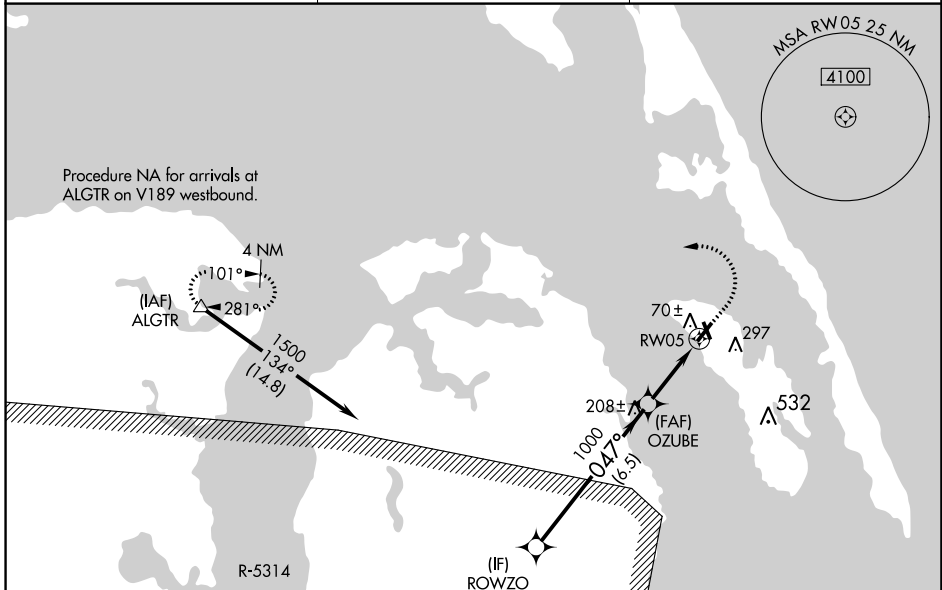
DARE COUNTY RGNL (MQI)

RNP APCH-GPS.

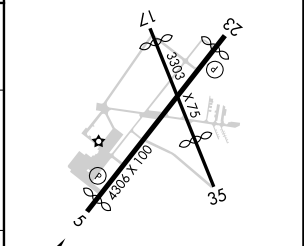
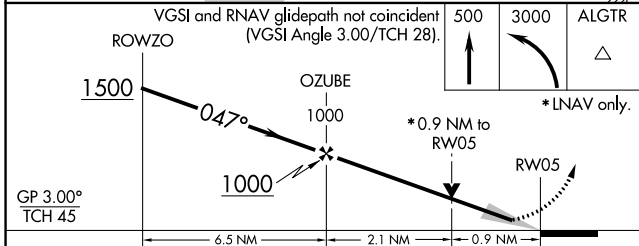
▼ For uncompensated Baro-VNAV systems, LNAV/VNAV NA below -5°C or above 54°C.
 ▲ When local altimeter setting not received, use Elizabeth City altimeter setting and increase all DA 72 feet and all MDA 80 feet; increase LPV all Cats visibility 3/8 mile; increase LNAV/VNAV all Cats visibility 1/4 mile; increase LNAV Cat C visibility 1/8 mile. Baro-VNAV and VDP NA when using Elizabeth City altimeter setting. Circling Rwy 17, 35 NA at night.

MISSED APPROACH: Climb to 500 then climbing left turn to 3000 direct ALGTR and hold.

AWOS-3 128.275	CERRY POINT APP CON 124.725 350.35	UNICOM 122.8 (CTAF)
--------------------------	--	-------------------------------



ELEV 13	TDZE 12
---------	---------



CATEGORY	A	B	C	D
LPV DA	262-3/4	250 (300-3/4)		NA
LNAV/VNAV DA	347-1 1/8	335 (400-1 1/8)		NA
LNAV MDA	460-1	448 (500-1)	460-1 3/8 448 (500-1 3/8)	NA
CIRCLING	600-1	587 (600-1)	600-1 1/2 587 (600-1 1/2)	NA

SE-2, 23 MAR 2023 to 20 APR 2023

SE-2, 23 MAR 2023 to 20 APR 2023