

WAAS CH <b>56326</b> <b>W23A</b>	APP CRS <b>227°</b>	Rwy Idg TDZE <b>12</b> Apt Elev <b>13</b>	<b>4005</b>
--	------------------------	---	-------------

# RNAV (GPS) RWY 23

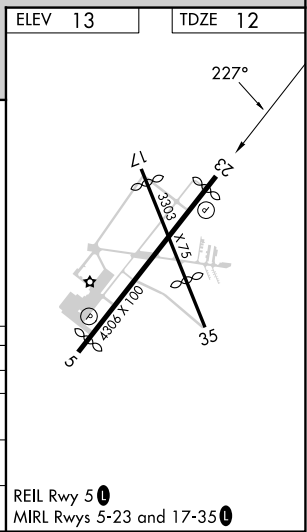
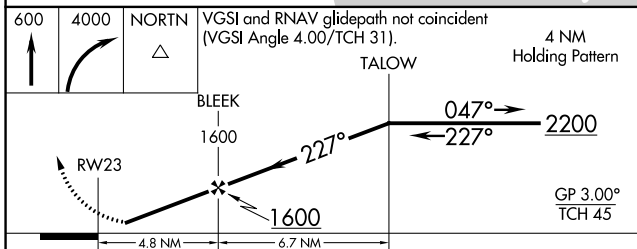
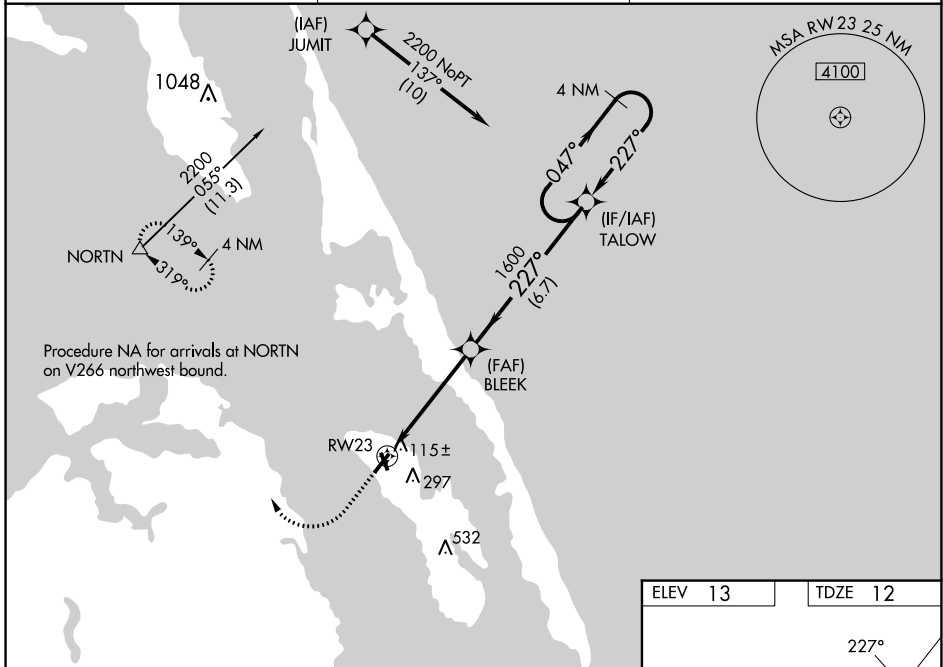
DARE COUNTY RGNL (MQI)

RNP APCH-GPS.

**⚠** Baro-VNAV NA when using Elizabeth City altimeter setting. For uncompensated Baro-VNAV systems, LNAV/VNAV NA below -5°C or above 54°C. When VGSI inop, Straight-in/ Circling Rwy 23 procedure NA at night. Visibility reduction by helicopters NA. When local altimeter setting not received, use Elizabeth City altimeter setting and increase LPV DA to 404, LNAV/VNAV DA to 357 and all MDA 80 feet; increase LPV all Cats visibility and Circling Cat C visibility ¼ mile; increase LNAV/VNAV all Cats visibility ½ mile; and increase LNAV Cat C visibility ¾ mile. Circling Rwy 17 NA at night.

**⚠** MISSED APPROACH: Climb to 600 then climbing right turn to 4000 direct NORTN and hold continue climb-in-hold to 4000.

AWOS-3 <b>128.275</b>	CHERRY POINT APP CON <b>124.725 350.35</b>	UNICOM <b>122.8 (CTAF) 0</b>
--------------------------	---	---------------------------------



CATEGORY	A	B	C	D
LPV DA	332-1	320 (400-1)		NA
LNAV/VNAV DA	285-1	273 (300-1)		NA
LNAV MDA	520-1	508 (600-1)	520-1 3/8 508 (600-1 3/8)	NA
CIRCLING	600-1	587 (600-1)	600-1 1/2 587 (600-1 1/2)	NA

SE-2, 23 MAR 2023 to 20 APR 2023

SE-2, 23 MAR 2023 to 20 APR 2023

REIL Rwy 5 0  
MIRL Rwy 5-23 and 17-35 0