

WAAS CH 62926 W17A	APP CRS 167°	Rwy Idg TDZE Apt Elev	3013 13 13
--	------------------------	-----------------------------	---------------------------------------

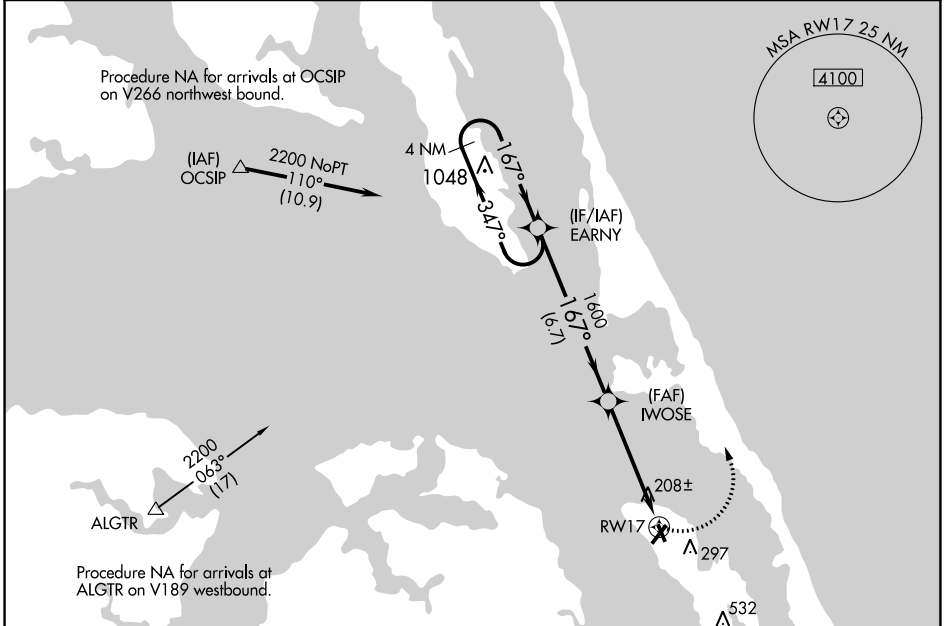
RNAV (GPS) RWY 17

DARE COUNTY RGNL (MQI)

⚠ DME/DME RNP-0.3 NA. Helicopter visibility reduction below 1 SM NA.
⚠ Night landing Rwy 17 NA. When local altimeter setting not received use Elizabeth City altimeter setting and increase all MDA 80 feet; increase LP and LNAV Cat C visibility 1/8 mile and Circling Cat C visibility 1/4 mile.

MISSED APPROACH: Climbing left turn to 2200 direct EARNY and hold.

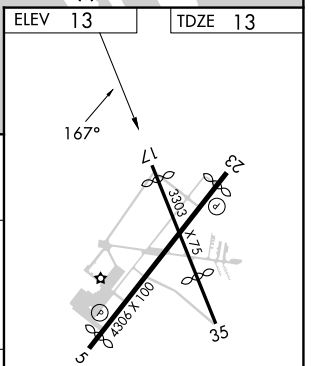
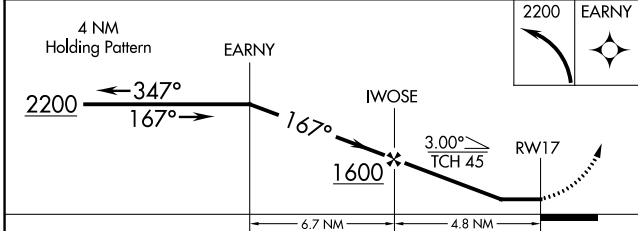
AWOS-3 128.275	CHERRY POINT APP CON 124.725 350.35	UNICOM 122.8(CTAF) 0
--------------------------	---	--------------------------------



SE-2, 23 MAR 2023 to 20 APR 2023

SE-2, 23 MAR 2023 to 20 APR 2023

ELEV 13	TDZE 13
---------	---------



CATEGORY	A	B	C	D
LP MDA	460-1	447 (500-1)	460-1 3/8 447 (500-1 3/8)	NA
LNAV MDA	460-1	447 (500-1)	460-1 3/8 447 (500-1 3/8)	NA
CIRCLING	600-1	587 (600-1)	600-1 1/2 587 (600-1 1/2)	NA

REIL Rwy 5 0
MIRL Rwy 5-23 and 17-35 0