

NDB SOA <b>371</b>	APP CRS <b>175°</b>	Rwy Idg <b>3944</b>
		TDZE <b>2139</b>
		Apt Elev <b>2140</b>

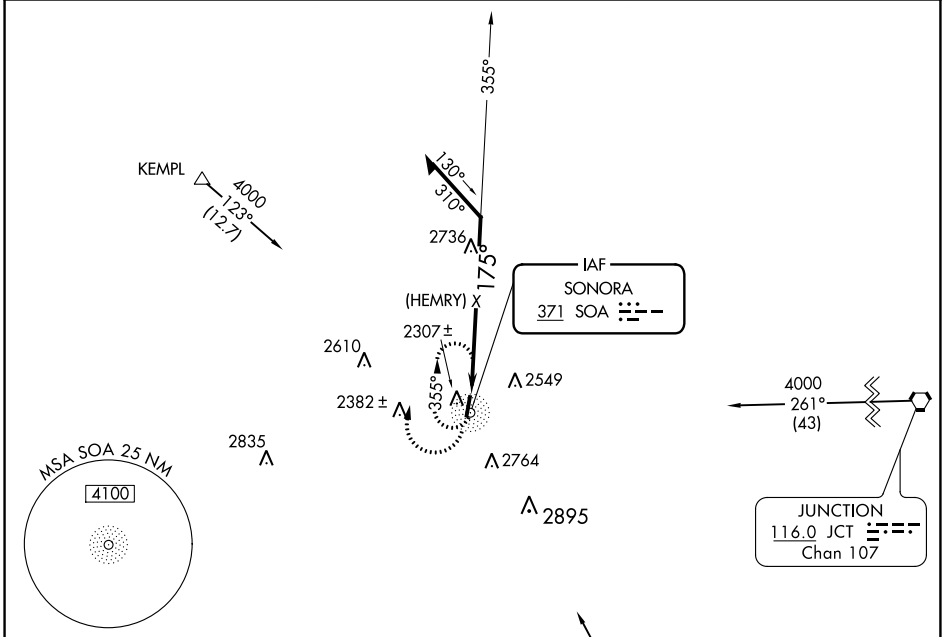
# NDB or GPS RWY 18

SONORA MUNI (SOA)

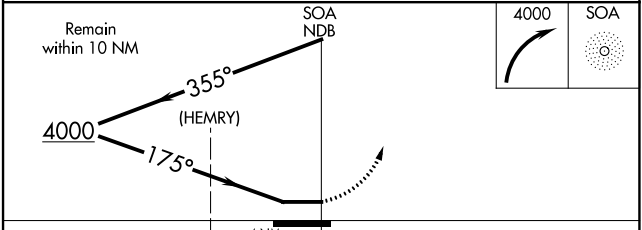
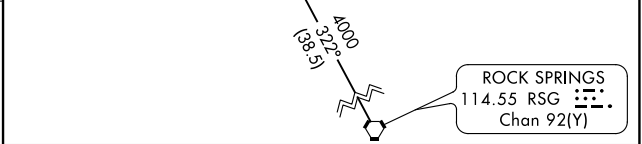
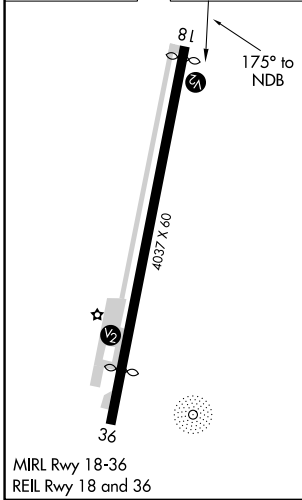
**⚠** Procedure not authorized at night. Use San Angelo altimeter setting.

**⚠** NA MISSED APPROACH: Climbing right turn to 4000 in SOA NDB holding pattern.

AWOS-3 <b>118.075</b>	HOUSTON CENTER <b>125.75 346.4</b>	UNICOM <b>122.8 (CTAF) 0</b>
--------------------------	---------------------------------------	---------------------------------



ELEV 2140	TDZE 2139
-----------	-----------



CATEGORY	A	B	C	D
S-18	3240-1¼ 1100 (1100-1¼)	3240-1½ 1100 (1100-1½)		NA
CIRCLING	3240-1¼ 1100 (1100-1¼)	3240-1½ 1100 (1100-1½)		NA

SC-3, 23 MAR 2023 to 20 APR 2023

SC-3, 23 MAR 2023 to 20 APR 2023