

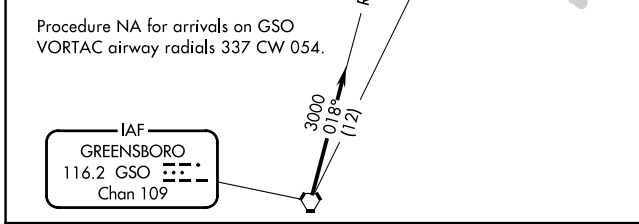
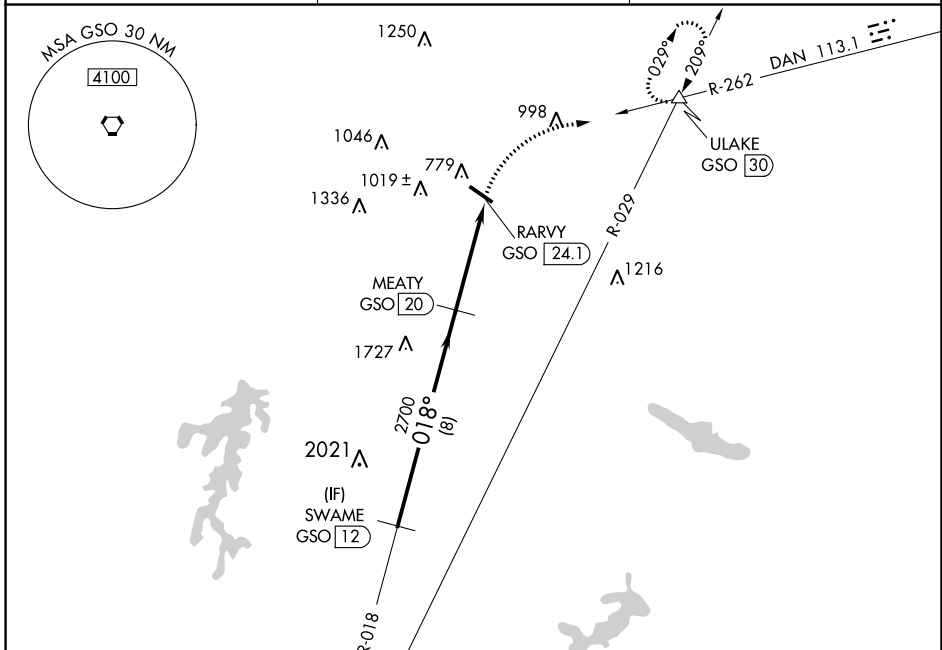
VORTAC GSO <b>116.2</b> Chan <b>109</b>	APP CRS <b>018°</b>	Rwy Idg TDZE Apt Elev <b>N/A</b> <b>N/A</b> <b>694</b>
---	------------------------	---

# VOR/DME-A

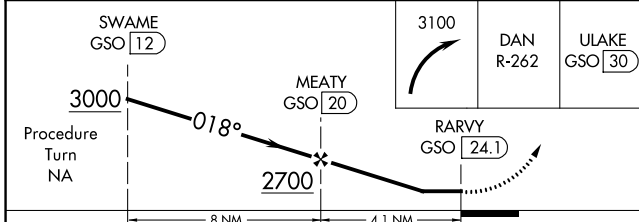
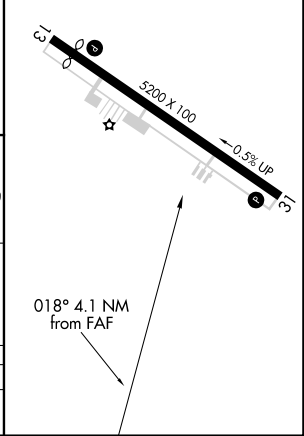
ROCKINGHAM COUNTY NC SHILOH (SIF')

<p><b>▼</b> Helicopter visibility reduction NA. <b>▲</b> NA Procedure NA at night.</p>	<p>MISSED APPROACH: Climbing right turn to 3100 via DAN VOR R-262 to ULAKE/GSO 30 DME and hold.</p>
--	---

<p>AWOS-3 <b>119.775</b></p>	<p>GREENSBORO APP CON <b>124.35 269.225</b></p>	<p>UNICOM <b>122.8 (CTAF)</b></p>
----------------------------------	---	---------------------------------------



ELEV 694
REIL Rwy 13 and 31
HIRL Rwy 13-31



CATEGORY	A	B	C	D
CIRCLING	1400-1 706 (800-1)	1400-1¼ 706 (800-1¼)	1400-2 706 (800-2)	1420-2¼ 726 (800-2¼)

SE-2, 23 MAR 2023 to 20 APR 2023

SE-2, 23 MAR 2023 to 20 APR 2023