

| | | | |
|--|------------------------|-----------------------------|---|
| WAAS CH 42637 W04A | APP CRS 038° | Rwy Idg TDZE Apt Elev | 5004 2387 2396 |
|--|------------------------|-----------------------------|---|

RNAV (GPS) RWY 4

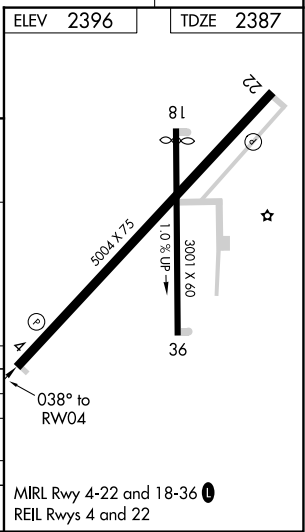
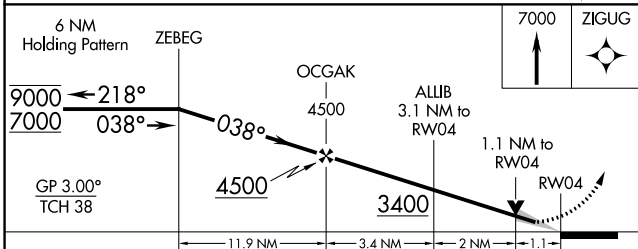
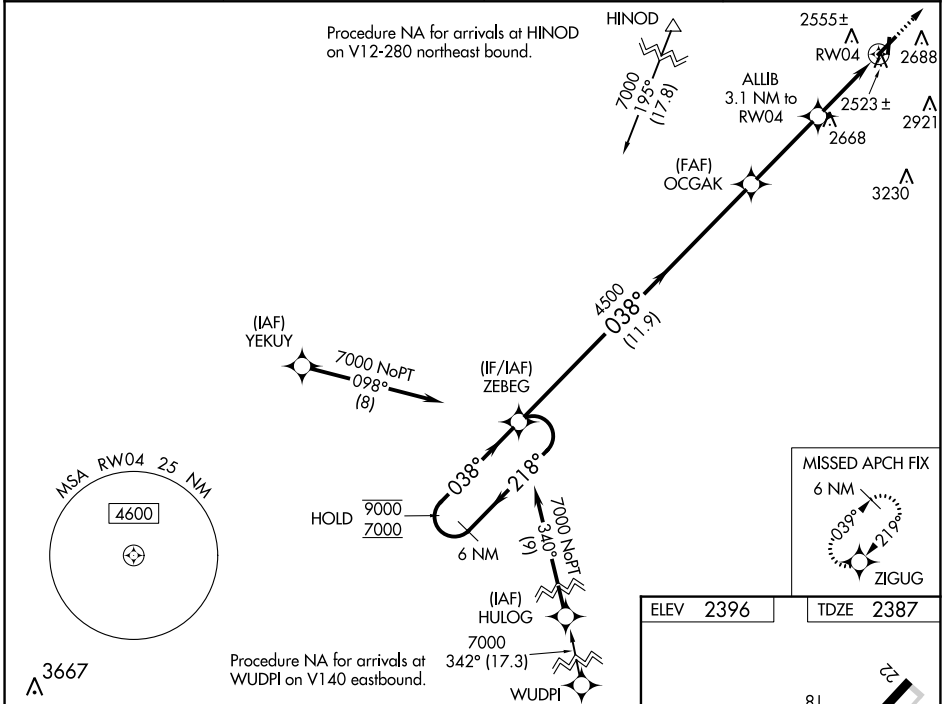
HEMPHILL COUNTY (HHF)

RNP APCH - GPS.

⚠ Circling NA to Rws 18 and 36. For uncompensated Baro-VNAV systems, LNAV/VNAV NA below -19°C or above 54°C. When local altimeter setting not received, use Gage altimeter setting and increase LPV DA to 2751; increase LNAV/VNAV DA to 2798 feet and all visibilities ¾ SM. Increase all MDAs 120 feet and LNAV visibility Cat C/D ¼ SM, and Circling visibility Cat C ¼ SM. VDP and Baro-VNAV NA when using Gage altimeter setting.

⚠ MISSED APPROACH: Climb to 7000 direct ZIGUG and hold, continue climb-in-hold to 7000.

| | | | |
|--------------------------|---|---|----------------------|
| AWOS-3 119.025 | ALBUQUERQUE CENTER 127.85 285.475 | KANSAS CITY CENTER 126.95 379.2 | CTAF 122.9 |
|--------------------------|---|---|----------------------|



| CATEGORY | A | B | C | D |
|--------------|--------|-------------|-------------------------|------------------------|
| LPV DA | | 2637-1 | 250 (300-1) | |
| LNAV/VNAV DA | | 2684-1 | 297 (300-1) | |
| LNAV MDA | 2780-1 | 393 (400-1) | 2780-1½ | 393 (400-1½) |
| CIRCLING | 3040-1 | 644 (700-1) | 3280-2¾ 884 (900-2¾) | 3340-3 944 (1000-3) |

SC-2, 23 MAR 2023 to 20 APR 2023

SC-2, 23 MAR 2023 to 20 APR 2023