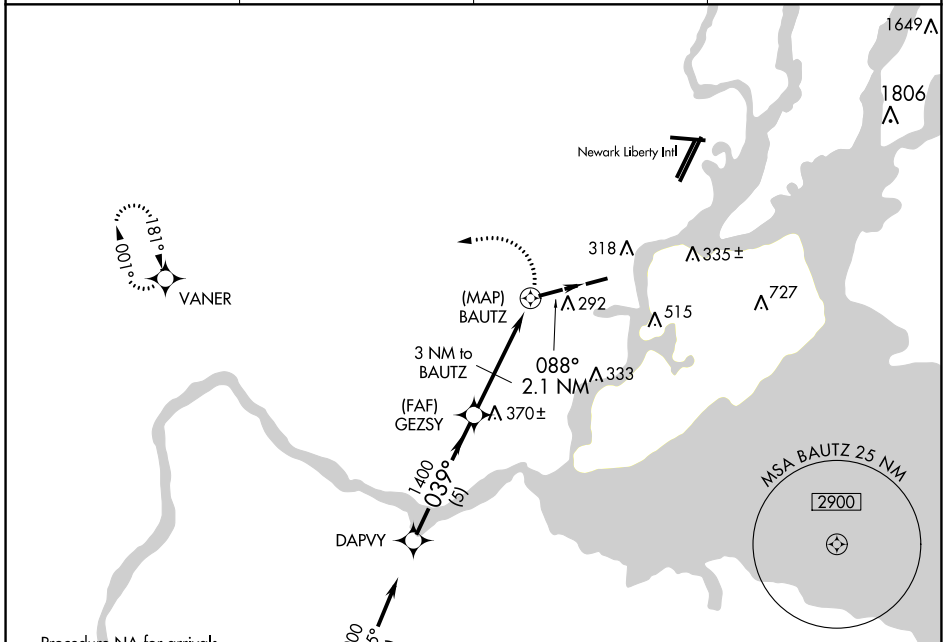


APP CRS <b>039°</b>	Rwy Idg TDZE Apt Elev	<b>N/A</b> <b>N/A</b> <b>22</b>
------------------------	-----------------------------	---------------------------------------

**GPS-A**  
LINDEN (LDJ)

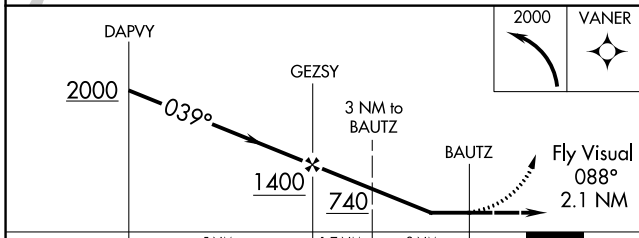
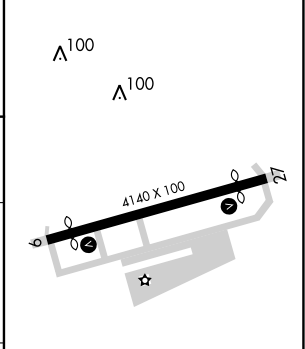
RNP APCH - GPS	When local altimeter setting not received, use Newark Liberty Intl altimeter setting. Helicopter visibility reduction below 1 SM NA. Procedure NA at night.	MISSED APPROACH: Climbing left turn to 2000 direct VANER WP and hold.
----------------	---	---

AWOS-3 <b>124.025</b>	NEW YORK APP CON <b>128.55 379.9</b>	CLNC DEL <b>127.25</b>	UNICOM <b>123.0 (CTAF) 0</b>
--------------------------	---	---------------------------	---------------------------------



Procedure NA for arrivals at WARRD on V213 southbound and on TK502 westbound.

ELEV 22
---------



CATEGORY	A	B	C	D
CIRCLING	620-2½	598 (600-2½)	880-2½ 858 (900-2½)	NA
NEWARK ALTIMETER SETTING MINIMUMS				
CIRCLING	640-2½	618 (700-2½)	900-2½ 878 (900-2½)	NA

MIRL Rwy 9-27 0	REIL Rwy 9 and 27 0
-----------------	---------------------

NE-2, 23 MAR 2023 to 20 APR 2023

NE-2, 23 MAR 2023 to 20 APR 2023