

WAAS CH <b>82733</b> <b>W33A</b>	APP CRS <b>335°</b>	Rwy Idg TDZE <b>766</b> Apt Elev <b>769</b>	<b>3304</b>
--	------------------------	---	-------------

# RNAV (GPS) RWY 33

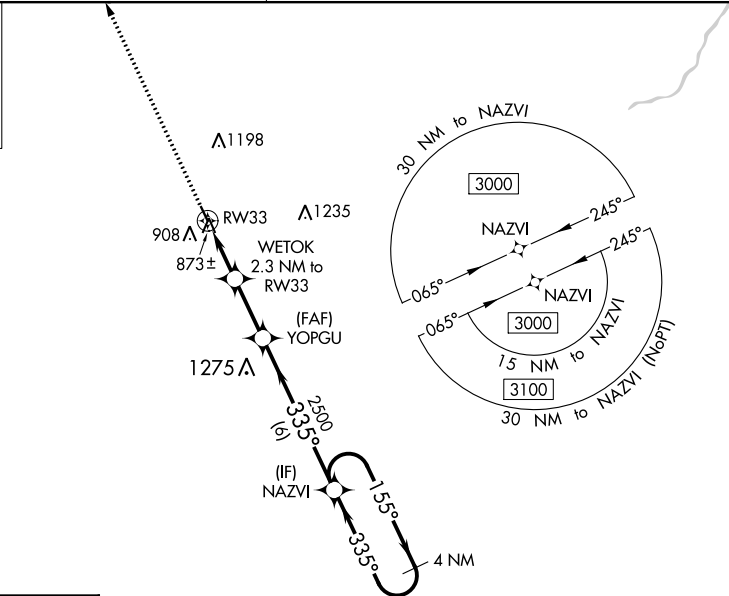
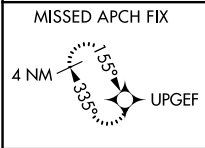
MAQUOKETA MUNI (OQW)

**⚠** Circling to Rwy 15 NA at night. Baro-VNAV NA when using Dubuque altimeter setting. For uncompensated Baro-VNAV systems, LNAV/VNAV NA below -16°C (4°F) or above 54°C (130°F). DME/DME RNP-0.3 NA. Helicopter visibility reduction below 1 SM NA. Obtain local altimeter on CTAF; when not received, use Dubuque altimeter setting and increase all DA 92 feet and all MDA 100 feet. Increase LPV all Cats visibility to 1¼ mile and LNAV/VNAV all Cats visibility to 1½ mile.

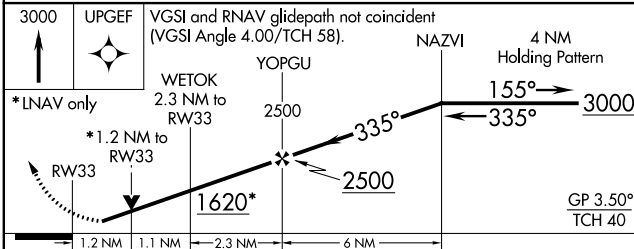
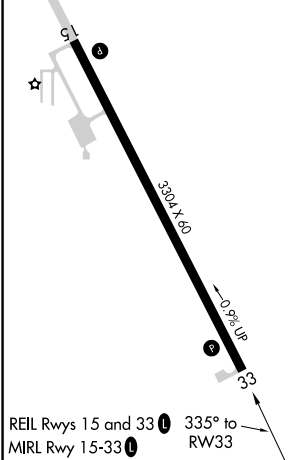
MISSED APPROACH: Climb to 3000 direct UPGEF and hold.

CHICAGO CENTER  
**133.95 281.4**

UNICOM  
**122.725 (CTAF) 0**



ELEV 769	TDZE 766
----------	----------



CATEGORY	A	B	C	D
LPV DA	1106-1	340 (400-1)		NA
LNAV/VNAV DA	1064-1	298 (300-1)		NA
LNAV MDA	1140-1	374 (400-1)		NA
<b>C</b> CIRCLING	1240-1 471 (500-1)	1400-1 631 (700-1)		NA

NC-3, 23 MAR 2023 to 20 APR 2023

NC-3, 23 MAR 2023 to 20 APR 2023