

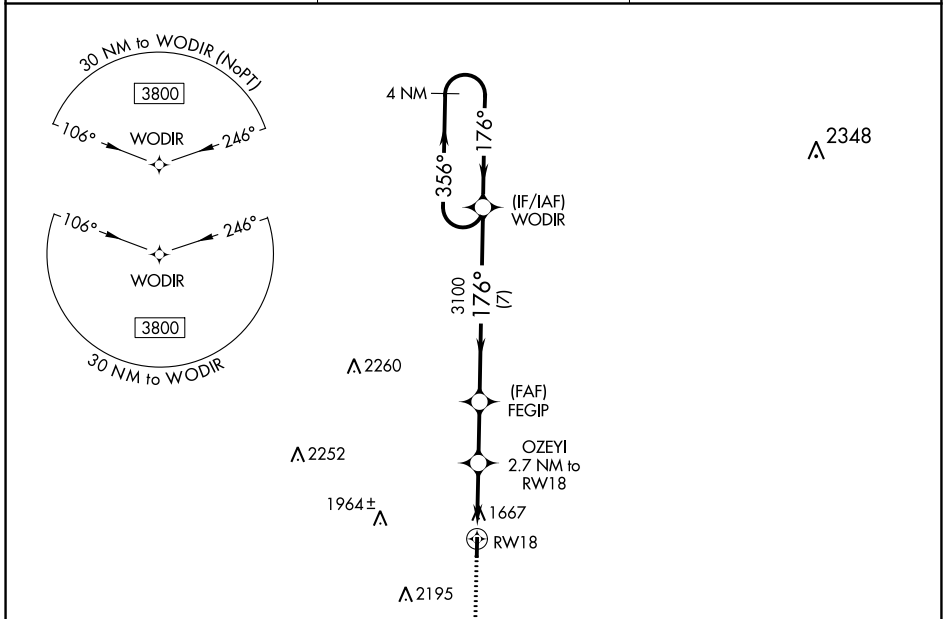
APP CRS	Rwy Idg	3716
176°	TDZE	1502
	Apt Elev	1514

RNAV (GPS) RWY 18

MASON COUNTY (T92)

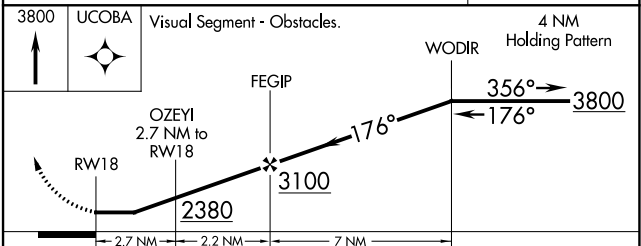
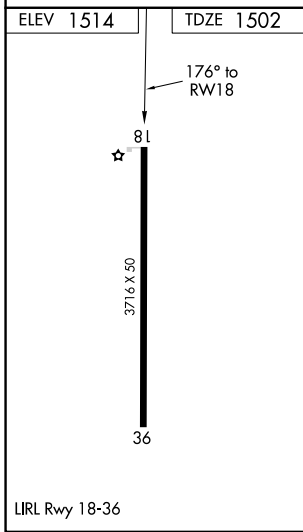
<p>▼ Rwy 18/36 helicopter visibility reduction below 1 SM NA. DME/DME RNP-0.3 NA. Procedure NA at night.</p> <p>▲ NA Use Brady altimeter setting; when not received, use Llano altimeter setting and increase all MDAs 20 feet.</p>	<p>MISSED APPROACH: Climb to 3800 direct UCOBA and hold.</p>
---	--

<p>BBD AWOS-3 118.375</p>	<p>HOUSTON CENTER 132.35 317.5</p>	<p>CTAF 122.9</p>
--------------------------------------	---	------------------------------



SC-3, 23 MAR 2023 to 20 APR 2023

SC-3, 23 MAR 2023 to 20 APR 2023



CATEGORY	A	B	C	D
LNVA MDA	2080-1	578 (600-1)	NA	
☑ CIRCLING	2140-1	626 (700-1)	NA	