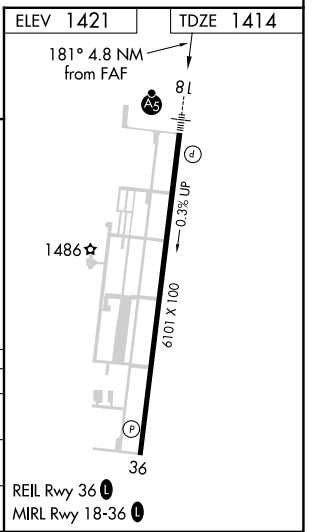
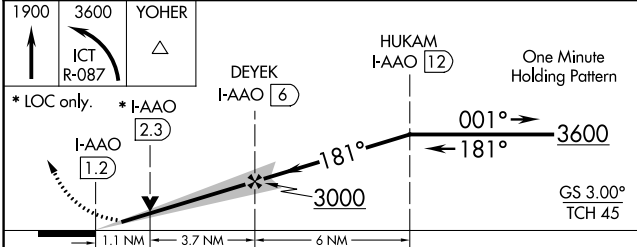
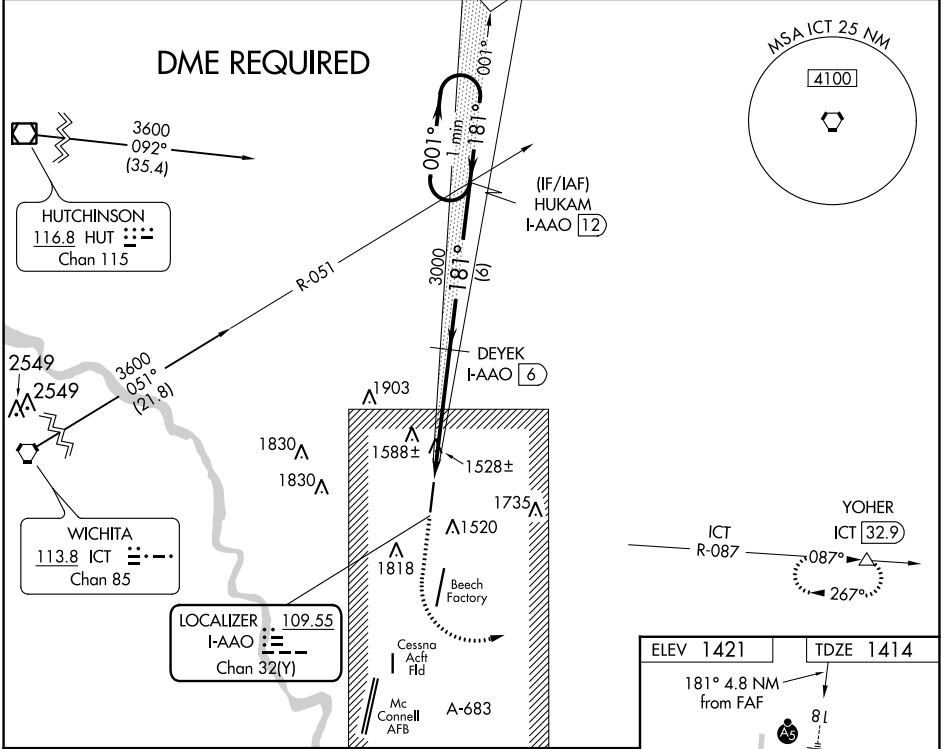


LOC/DME I-AAO 109.55 Chan 32 (Y)	APP CRS 181°	Rwy Idg TDZE Apt Elev 6101 1414 1421
---	------------------------	--

ILS or LOC RWY 18
COLONEL JAMES JABARA (A.A.O)

▽ ▲ DME required.	MALSR 	MISSED APPROACH: Climb to 1900 then climbing left turn to 3600 on ICT VORTAC R-087 to YOHER/ICT 32.9 DME and hold.	
ASOS 134.025	WICHITA APP CON 134.8 269.1	CLNC DEL 125.0	UNICOM 122.7 (CTAF) 0



CATEGORY	A	B	C	D
S-ILS 18	1614-1/2		200 (200-1/2)	
S-LOC 18	1800-1/2	386 (400-1/2)	1800-5/8 386 (400-3/8)	1800-3/4 386 (400-3/4)
CIRCLING	1880-1 459 (500-1)	1940-1 519 (600-1)	2120-2 699 (700-2)	2220-2 1/2 799 (800-2 1/2)

NC-2, 23 MAR 2023 to 20 APR 2023

NC-2, 23 MAR 2023 to 20 APR 2023