

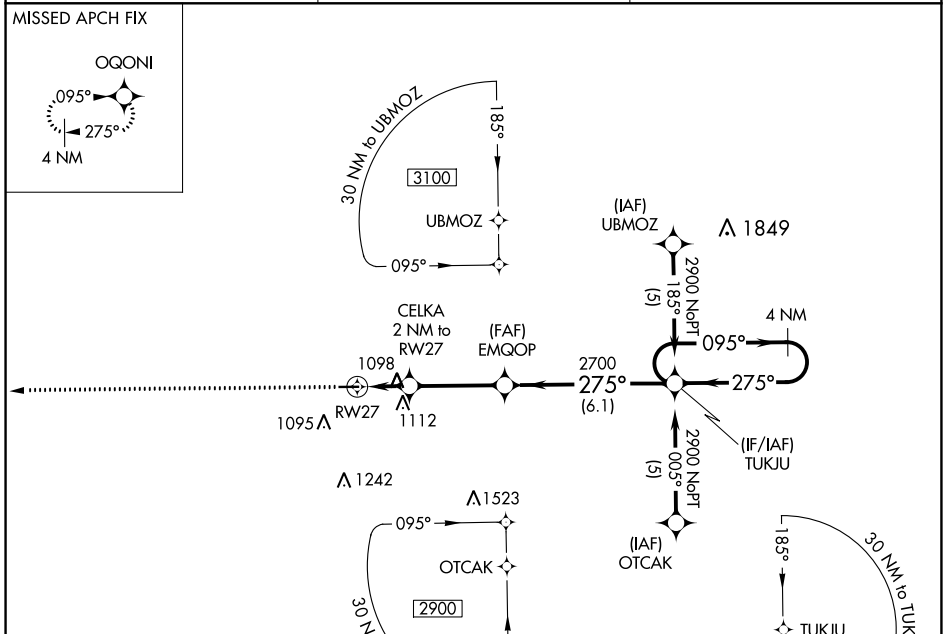
APP CRS	Rwy Idg	<b>3199</b>
<b>275°</b>	TDZE	<b>919</b>
	Apt Elev	<b>920</b>

# RNAV (GPS) RWY 27

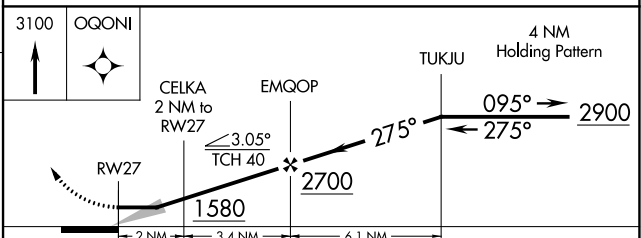
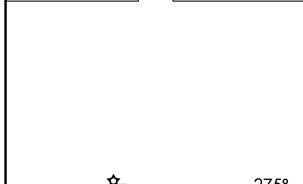
PRICES (9G2)

RNP APCH.	MISSED APPROACH: Climb to 3100 direct OQONI and hold.
<p>▼ Use Flint altimeter setting; when not received, use Howell altimeter setting.</p> <p>▲ NA Procedure NA at night. Rwy 27 helicopter visibility reduction below 1 SM NA.</p>	

FNT ASOS <b>133.15</b>	GREAT LAKES APP CON ★ <b>128.55 257.9</b>	UNICOM <b>123.0 (CTAF) 0</b>
---------------------------	----------------------------------------------	---------------------------------



ELEV 920	TDZE 919
----------	----------



REIL Rwy 9 0	MIRL Rwy 9-27 0
CATEGORY	A B C D
LNAV MDA	1400-1 481 (500-1) NA

EC-1, 23 MAR 2023 to 20 APR 2023

EC-1, 23 MAR 2023 to 20 APR 2023