

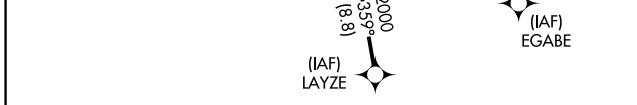
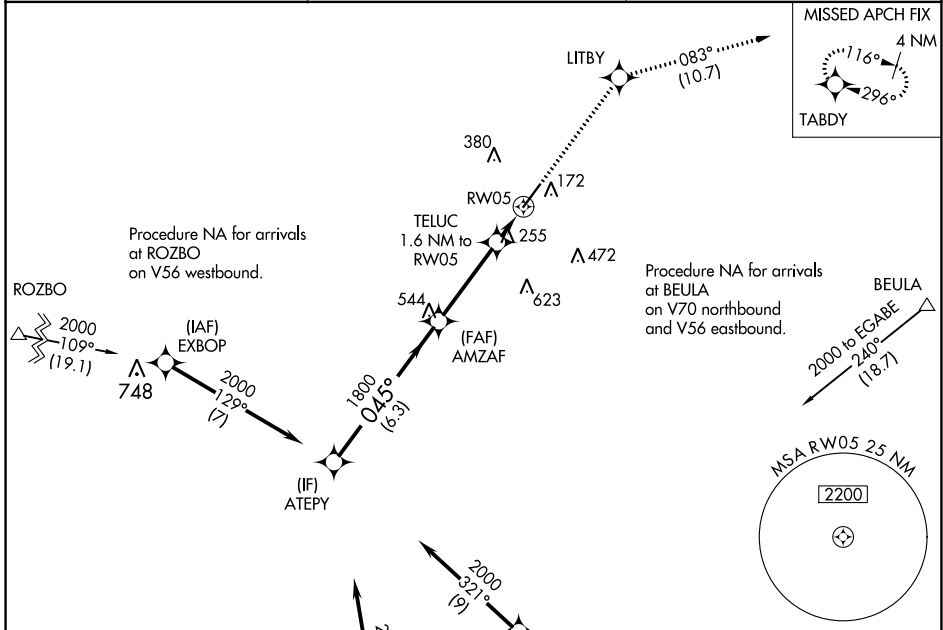
WAAS CH 63121 W05A	APP CRS 045°	Rwy Idg TDZE Apt Elev	6003 135 137
--	------------------------	-----------------------------	---

RNAV (GPS) RWY 5

DUPLIN COUNTY (DPL)

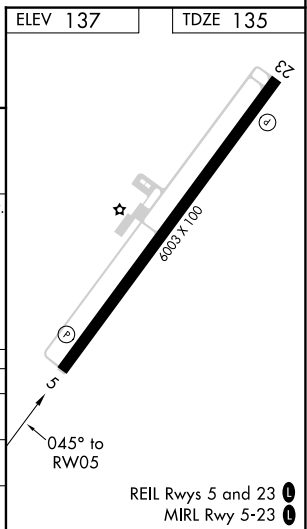
RNP APCH.	MISSED APPROACH: Climb to 2000 direct LITBY and on track 083° to TABDY and hold.
▼ For uncompensated Baro-VNAV systems, LNAV/VNAV NA below -15°C or above 54°C.	

AWOS-3 120.675	SEYMOUR JOHNSON APP CON ★ 119.7 273.6	UNICOM 123.0 (CTAF) 0
--------------------------	---	---------------------------------



ATEPY	AMZAF	LITBY	TABDY
2000	1800	2000	2000
GP 3.00° TCH 40	TELUC 1.6 NM to RW05		
6.3 NM	3.5 NM	1.6 NM	
		*680	

CATEGORY	A	B	C	D
LPV DA		385-3/4	250 (300-3/4)	
LNAV/VNAV DA		396-7/8	261 (300-7/8)	
LNAV MDA	520-1	385 (400-1)	520-1 1/8	385 (400-1 1/8)



SE-2, 23 MAR 2023 to 20 APR 2023

SE-2, 23 MAR 2023 to 20 APR 2023