

APP CRS	Rwy Idg	<b>3280</b>
<b>134°</b>	TDZE	<b>1161</b>
	Apt Elev	<b>1174</b>

# RNAV (GPS) RWY 13

HARRISON COUNTY (8G6)

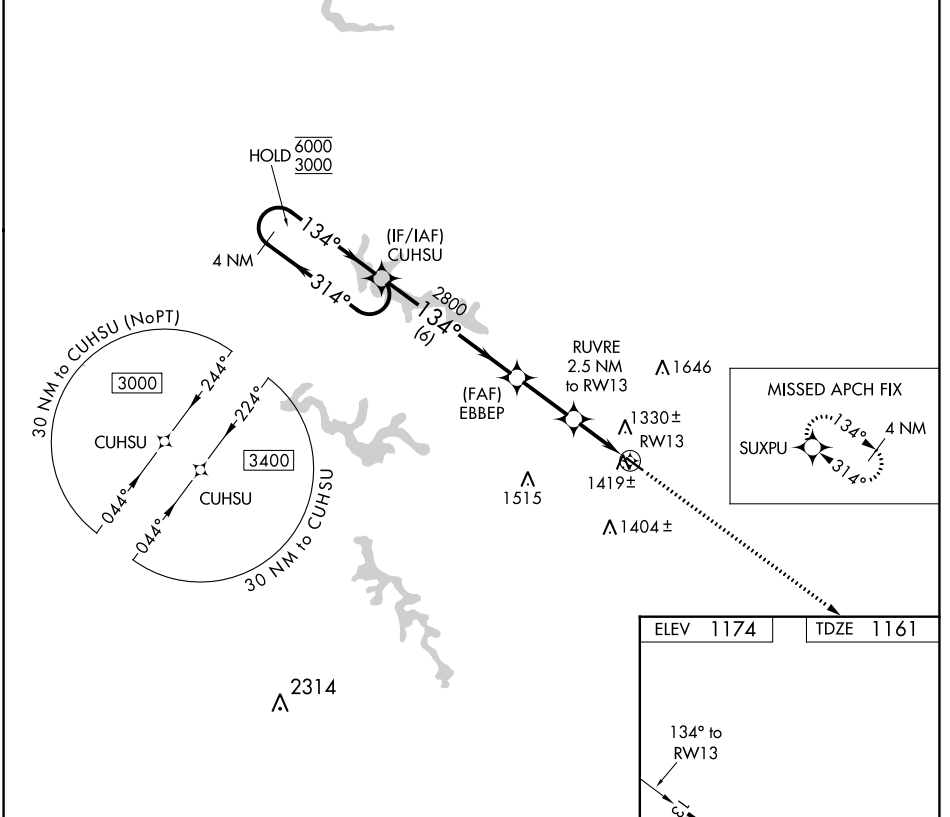
RNP APCH.

**▽** Rwy 13 helicopter visibility reduction below 1 SM NA. Use Wheeling altimeter setting; when not received, use Washington altimeter setting and increase all MDA 40 feet. Procedure NA at night.

**▲** NA

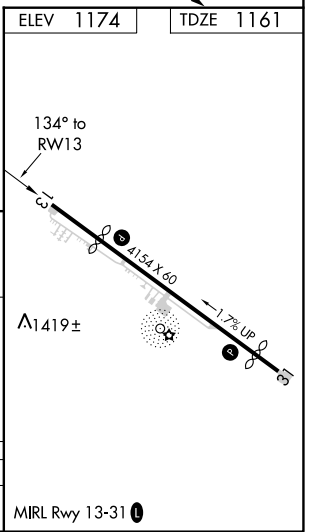
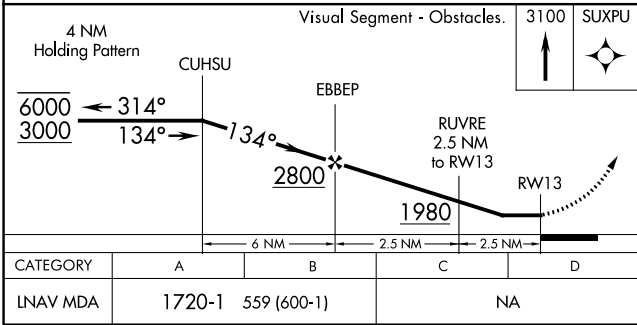
MISSED APPROACH: Climb to 3100 direct SUXPU and hold.

HLG ASOS <b>127.375</b>	CLEVELAND CENTER <b>126.95 239.30</b>	UNICOM <b>122.8 (CTAF) 0</b>
----------------------------	--	---------------------------------



EC-2, 23 MAR 2023 to 20 APR 2023

EC-2, 23 MAR 2023 to 20 APR 2023



CATEGORY	A	B	C	D
LNAV MDA	1720-1	559 (600-1)	NA	

MIRL Rwy 13-31 0