

APP CRS 230°	Rwy Idg TDZE Apt Elev	5001 74 74
------------------------	-----------------------------	---------------------------------------

RNAV (GPS) RWY 23

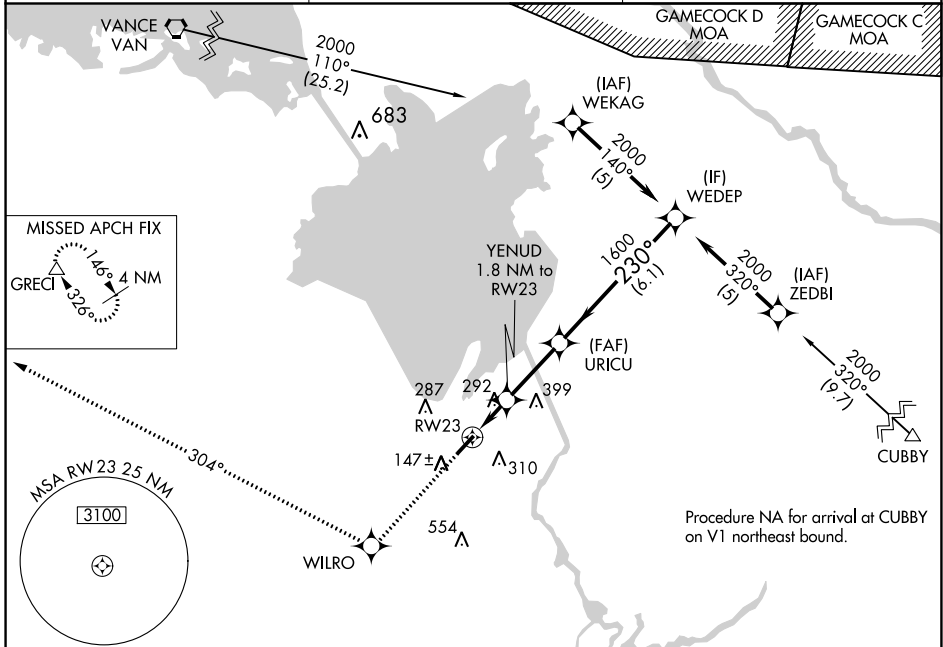
BERKELEY COUNTY (MKS)

RNP APCH-GPS

Procedure NA at night. Helicopter visibility reduction below 1 SM NA. When local altimeter setting not received, use Charleston AFB/Intl altimeter setting: increase all MDA 60 feet and increase LNAV Cat C/D and Circling Cat C/D visibility ¼ SM.

MISSED APPROACH: Climb to 2000 direct WILRO and via 304° track to GRECI and hold.

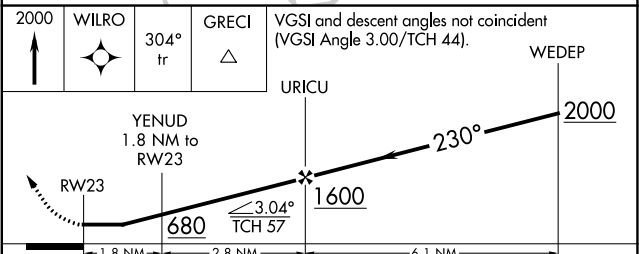
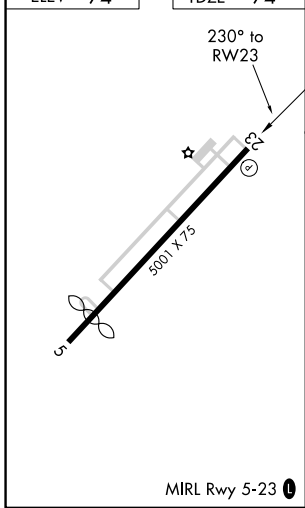
AWOS-3 119.175	CHARLESTON APP CON 119.3 379.925	UNICOM 123.05 (CTAF) 0
--------------------------	--	---



SE-2, 23 MAR 2023 to 20 APR 2023

SE-2, 23 MAR 2023 to 20 APR 2023

ELEV 74	TDZE 74
---------	---------



CATEGORY	A	B	C	D
LNAV MDA	560-1	486 (500-1)	560-1¼ 486 (500-1¼)	560-1½ 486 (500-1½)
CIRCLING	580-1 506 (600-1)	620-1 546 (600-1)	700-1¾ 626 (700-1¾)	860-2½ 786 (800-2½)