

WAAS CH 99517 W05A	APP CRS 048°	Rwy Idg 5002 TDZE 996 Apt Elev 1013
--	------------------------	--

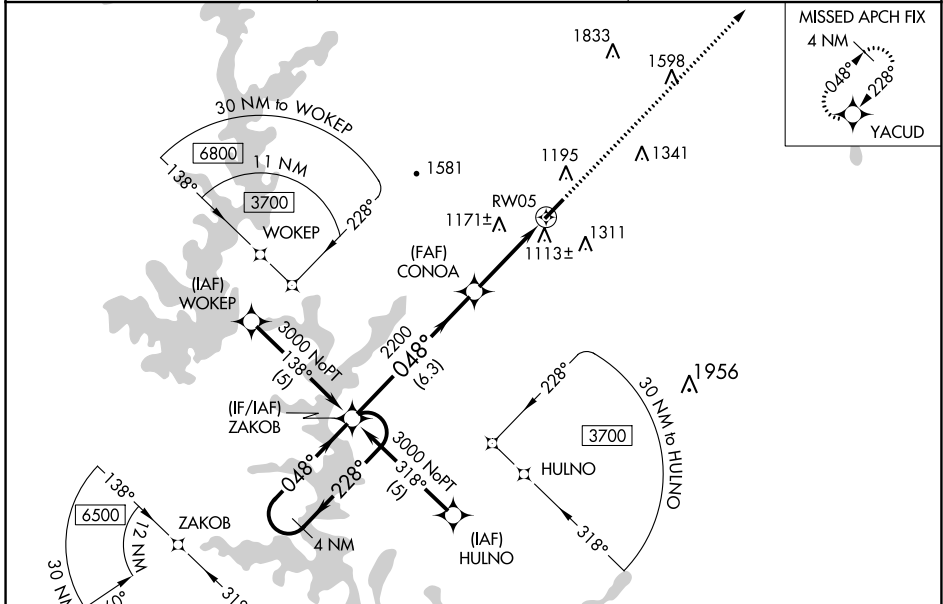
RNAV (GPS) RWY 5

PICKENS COUNTY (L,Q,K)

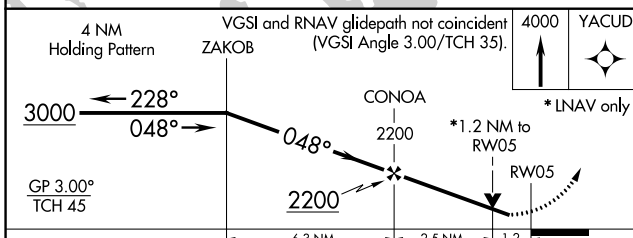
⚠ For uncompensated Baro-VNAV systems, LNAV/VNAV NA below -17°C (2°F) or above 46°C (114°F). DME/DME RNP-0.3 NA. Visibility reduction by helicopters NA. When local altimeter setting not received, use Clemson altimeter setting and increase LPV DA to 1292 feet and visibility all Cats ¼ SM; increase LNAV/VNAV DA to 1487 feet; increase all MDAs 60 feet and LNAV Cat C and Circling Cat D visibility ¼ SM, and LNAV Cat D visibility ½ SM. Baro-VNAV NA when using Clemson altimeter setting. VDP NA with Clemson altimeter setting.

⚠ NA MISSED APPROACH: Climb to 4000 direct YACUD and hold.

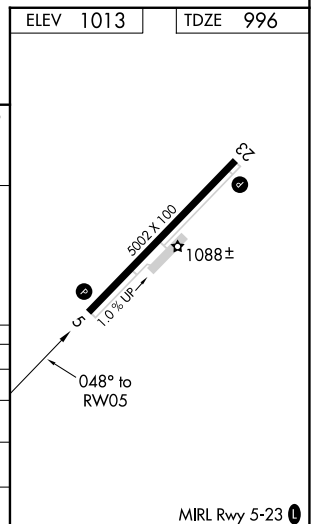
AWOS-3 120.0	GREER APP CON ★ 118.8 270.275	UNICOM 122.8 (CTAF) 0
------------------------	---	---------------------------------



ELEV 1013	TDZE 996
-----------	----------



CATEGORY	A	B	C	D
LPV DA	1246-1 250 (300-1)			
LNAV/VNAV DA	1441-1¾ 445 (500-1¾)			
LNAV MDA	1380-1	384 (400-1)	1380-1½ 384 (400-1½)	1380-1¼ 384 (400-1¼)
CIRCLING	1560-1 547 (600-1)	1620-1 607 (700-1)	1620-1¾ 607 (700-1¾)	1780-2½ 767 (800-2½)



SE-2, 23 MAR 2023 to 20 APR 2023

SE-2, 23 MAR 2023 to 20 APR 2023

MIRL Rwy 5-23 0