

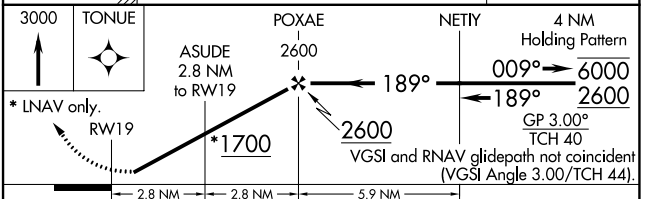
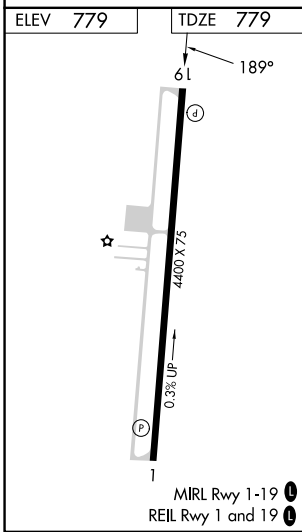
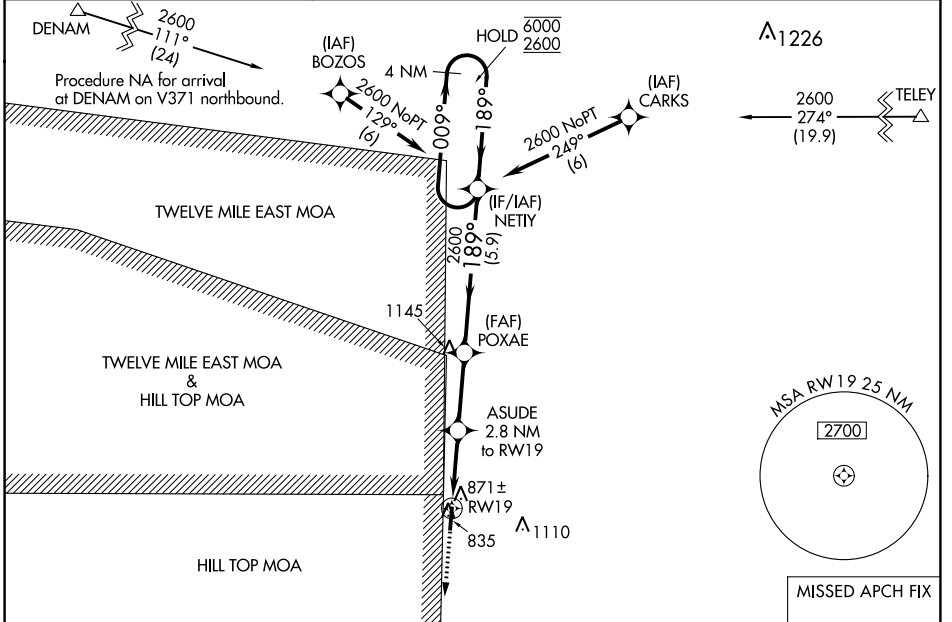
WAAS CH <b>50438</b> <b>W19A</b>	APP CRS <b>189°</b>	Rwy ldg 4400
	TDZE 779	
	Apt Elev 779	

# RNAV (GPS) RWY 19

PERU MUNI (I76)

RNP APCH.	MISSED APPROACH: Climb to 3000 direct TONUE and hold.
<p>▼ Rwy 19 Helicopter visibility reduction below 3/4 SM NA. Baro-VNAV NA. Use Grissom ARB altimeter setting; when not received use Logansport altimeter setting and increase all DAs 8 feet.</p> <p>▲ NA</p>	

KGUS ATIS <b>108.45 270.8</b>	GRISSOM APP CON ★ <b>121.05 338.275</b>	UNICOM <b>122.8 (CTAF) 0</b>
----------------------------------	--	---------------------------------



CATEGORY	A	B	C	D
LPV DA		1053-1	274 (300-1)	
LNAV/VNAV DA		1074-1	295 (300-1)	
LNAV MDA	1160-1	381 (400-1)	1160-1 1/8	381 (400-1 1/8)
CIRCLING	1280-1	501 (600-1)	1500-2 721 (800-2)	1500-2 1/4 721 (800-2 1/4)