

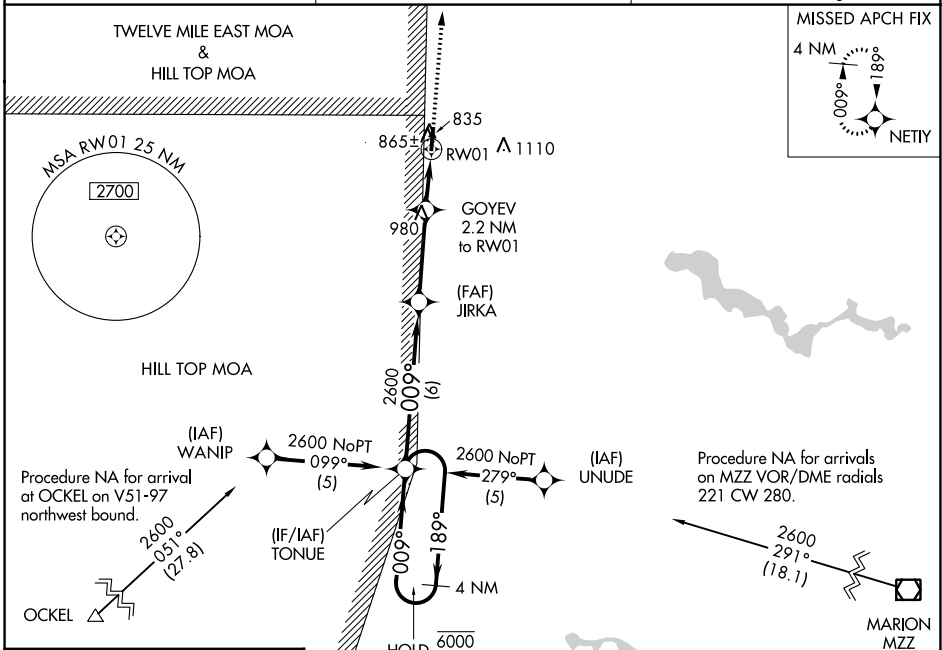
APP CRS	Rwy Idg	4400
009°	TDZE	777
	Apt Elev	779

RNAV (GPS) RWY 1

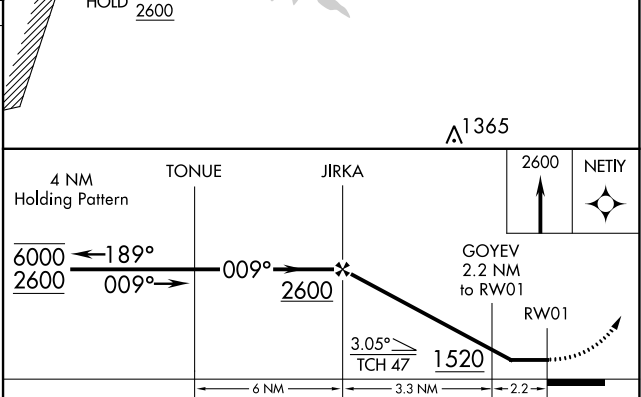
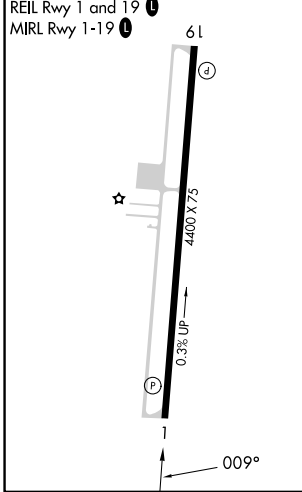
PERU MUNI (I76)

RNP APCH.		MISSED APPROACH: Climb to 2600 direct NETIY and hold.
▼	Rwy 1 helicopter visibility reduction below 1 SM NA. Use Grissom ARB altimeter setting;	
▲	NA	when not received, use Logansport altimeter setting.

KGUS ATIS 108.45 270.8	GRISSOM APP CON * 121.05 338.275	UNICOM 122.8 (CTAF) 0
----------------------------------	--	---------------------------------



ELEV 779	TDZE 777
----------	----------



CATEGORY	A	B	C	D
LNAV MDA	1240-1	463 (500-1)	1240-1 ³ / ₈ 463 (500-1 ³ / ₈)	1240-1 ¹ / ₂ 463 (500-1 ¹ / ₂)
<input checked="" type="checkbox"/> CIRCLING	1300-1	521 (600-1)	1500-2 721 (800-2)	1500-2 ¹ / ₄ 721 (800-2 ¹ / ₄)

EC-2, 23 MAR 2023 to 20 APR 2023

EC-2, 23 MAR 2023 to 20 APR 2023