

LIVERMORE THREE DEPARTURE (OBSTACLE)

SW-2, 23 MAR 2023 to 20 APR 2023

DEPARTURE ROUTE DESCRIPTION

TAKEOFF RUNWAYS 7L/R: Climb heading 075° to 1000, then climbing left turn heading 340° and on SAC VORTAC R-177 to ALTAM, thence

TAKEOFF RUNWAYS 25L/R: Climb heading 255° to 1200, then climbing right turn heading 020° and on OAK VOR/DME R-060 to ALTAM, thence

VCOA ALL RUNWAYS: Obtain ATC approval for VCOA when requesting IFR clearance. Climb in visual conditions to cross Livermore Airport at or above 3100, thence

. continue climb on course to the MEA/MCA for route of flight.

TAKEOFF MINIMUMS

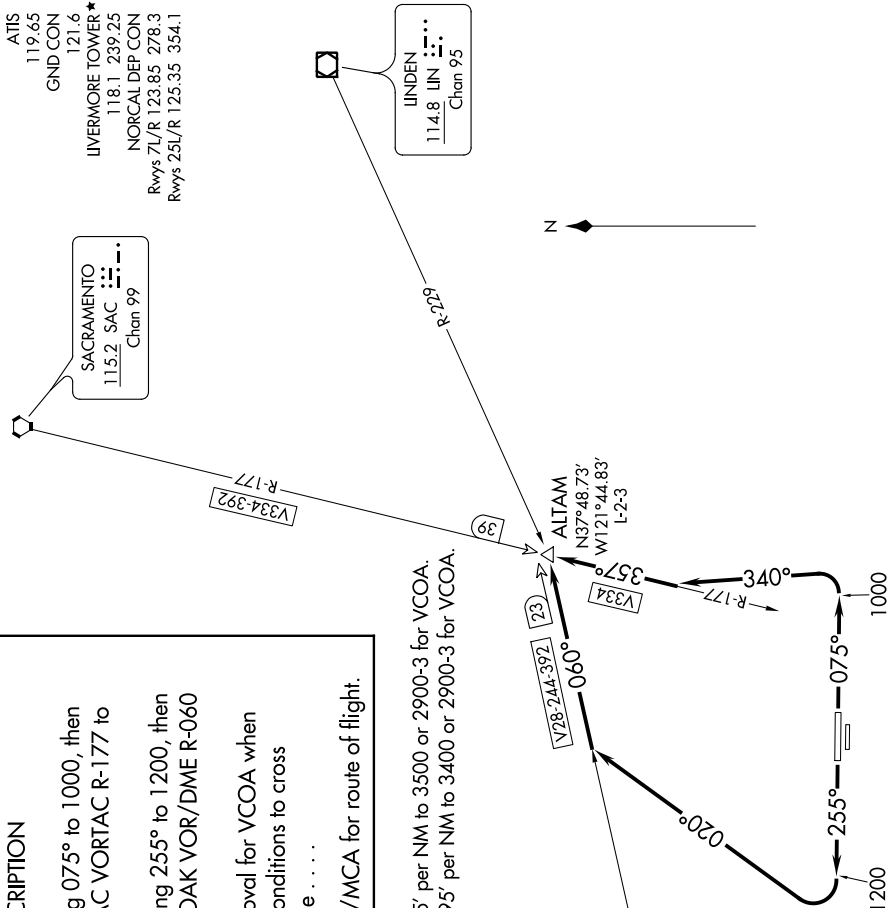
Rwys 7L/R: Standard with minimum climb of 375' per NM to 3500 or 2900-3 for VCOA.
Rwys 25L/R: Standard with minimum climb of 295' per NM to 3400 or 2900-3 for VCOA.

ATIS
119.65
GND CON
121.6
LIVERMORE TOWER ★
118.1 239.25
NORCAL DEP CON
Rwys 7L/R 123.85 278.3
Rwys 25L/R 125.35 354.1

SACRAMENTO
115.2 SAC
Chan 99

LINDEN
114.8 LIN
Chan 95

OAKLAND
116.8 OAK
Chan 115



(NOTES CONTINUED ON FOLLOWING PAGE)

NOTE: Chart not to scale.

LIVERMORE THREE DEPARTURE (OBSTACLE)

SW-2, 23 MAR 2023 to 20 APR 2023