

APP CRS	Rwy Idg	<b>4000</b>
<b>094°</b>	TDZE	<b>784</b>
	Apt Elev	<b>787</b>

# RNAV (GPS) RWY 9

VAN WERT COUNTY (VNW)

RNP APCH - GPS.

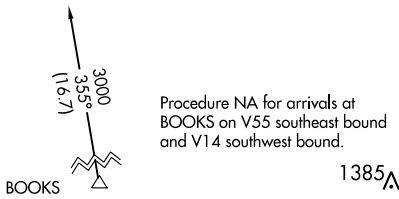
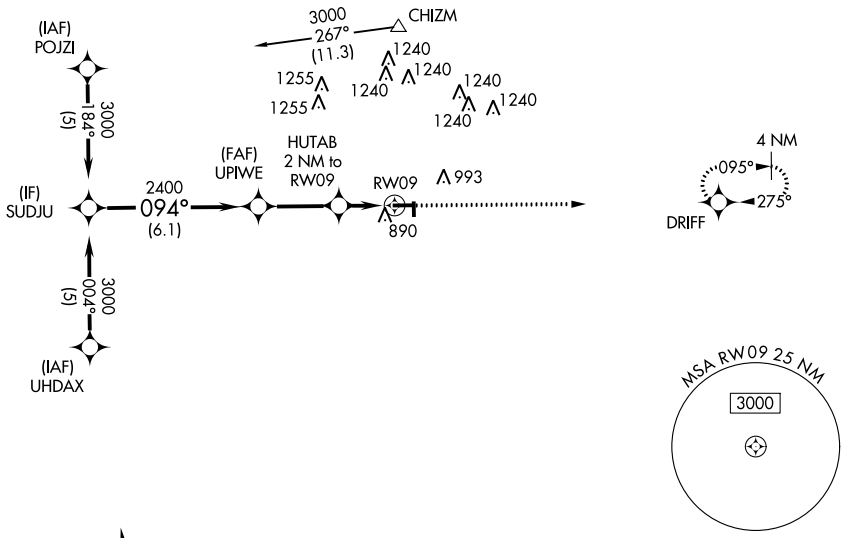
**▼** Circling NA to Rwy 18 and 36. Circling Rwy 27 NA at night. Rwy 9 helicopter visibility reduction below  $\frac{3}{4}$  SM NA.

**▲**

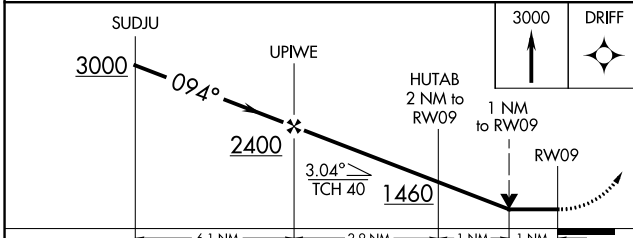
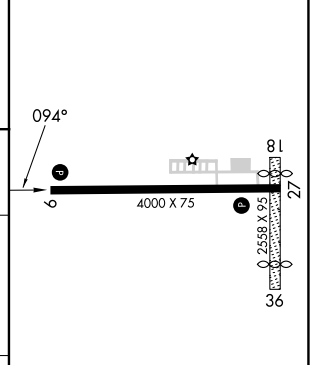
MISSED APPROACH: Climb to 3000 direct DRIFT and hold.

AWOS-3 <b>125.175</b>	FORT WAYNE APP CON <b>127.2 284.6</b>	UNICOM <b>123.0 (CTAF) 0</b>
--------------------------	--	---------------------------------

Procedure NA for arrivals at CHIZM on V38 eastbound.



ELEV	787	TDZE	784
------	-----	------	-----



CATEGORY	A	B	C	D
LNAV MDA	1160-1 376 (400-1)		1160-1 $\frac{1}{4}$ 376 (400-1 $\frac{1}{4}$ )	
<b>C</b> CIRCLING	1340-1 553 (600-1)		1340-1 $\frac{1}{2}$ 553 (600-1 $\frac{1}{2}$ )	1600-2 $\frac{3}{4}$ 813 (900-2 $\frac{3}{4}$ )

MIRL Rwy 9-27 **0**  
REIL Rwy 9 and 27 **0**

EC-2, 23 MAR 2023 to 20 APR 2023

EC-2, 23 MAR 2023 to 20 APR 2023