

RNAV (GPS) RWY 14

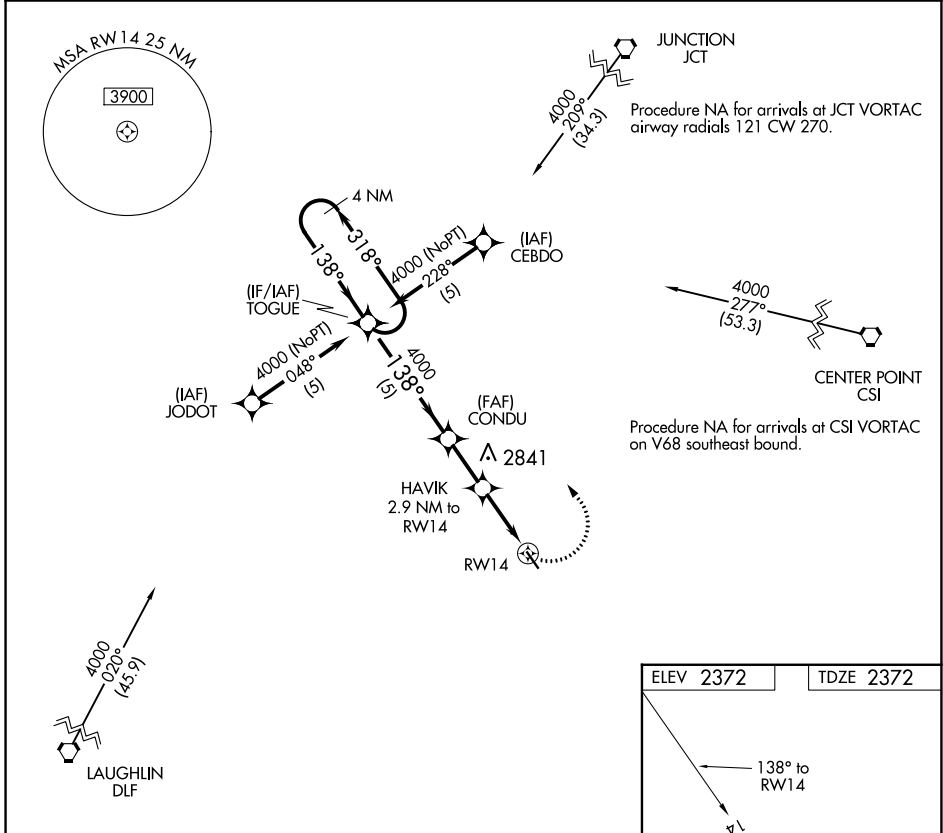
EDWARDS COUNTY (ECU)

APP CRS 138°	Rwy Idg 3772
	TDZE 2372
	Apt Elev 2372

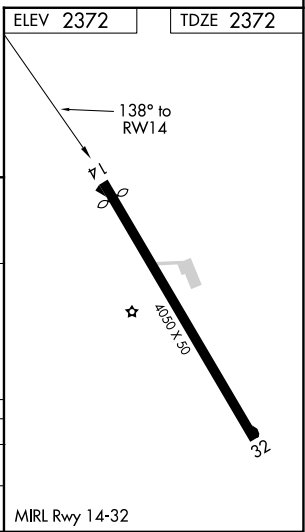
▼ DME/DME RNP-0.3 NA.
▲ NA Procedure NA at night.
 Helicopter visibility reduction below 1 SM NA.

MISSED APPROACH: Climbing left turn to 4000 direct TOGUE and hold.

AWOS-3 118.175	DEL RIO APP CON ★ 119.6 259.1	CTAF 122.9
--------------------------	---	----------------------



4 NM Holding Pattern	TOGUE	CONDU	HAVIK 2.9 NM to RWY 14	RWY 14
4000 ← 318°	← 138° →	4000	3320	
CATEGORY	A	B	C	D
RNAV MDA	2960-1	588 (600-1)	2960-1½ 588 (600-1½)	NA
C CIRCLING	3000-1	628 (700-1)	3000-1¾ 628 (700-1¾)	NA



SC-3, 23 MAR 2023 to 20 APR 2023

SC-3, 23 MAR 2023 to 20 APR 2023